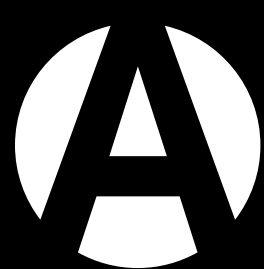




# The Golden Anniversaries

**JANUARY 22—FEBRUARY 15**

Granville Island Stage



ARTSCLUB  
THEATRE  
COMPANY

ENDLESS  
POSSIBILITIES  
on every  
stage.

# THE GOLDEN ANNIVERSARIES

By Mark Crawford

**JANUARY 22—FEBRUARY 15, 2026**

Granville Island Stage

Mark Crawford is a member of the Playwright’s Guild of Canada  
Produced by permission of Playwright & Marquis Literary (Colin Rivers) [www.MQlit.ca](http://www.MQlit.ca)  
*The Golden Anniversaries* was commissioned and developed by the Blyth Festival and premiered there July 4, 2024.

**CAST**

**Peter Anderson** Glen  
**Eileen Barrett** Sandy

**CREATIVE**

**Arthi Chandra** Director  
**Ryan Cormack** Set Designer  
**Madeleine Polak** Costume Designer  
**Alexandra Caprara** Lighting Designer  
**Rick Colhoun** Sound Designer  
**Lisa Goebel** Intimacy Director

---

**Ronaye Haynes** Stage Manager  
**Emma Graveson** Apprentice Stage Manager

## LAND ACKNOWLEDGEMENT

The Arts Club Theatre Company acknowledges the traditional, ancestral, and unceded territories of the [x̣<sup>w</sup>məθḳ<sup>w</sup>əyəm](#), [Skwxwú7mesh](#), and [səlilwətał Nations](#), the original stewards of this land on which we operate. We would like to ask those visiting or living here to share their thanks by supporting local Indigenous artists and communities. Acknowledging is always a start to supporting; as we step forward, we wish to be better partners, healers, and helpers to our Indigenous neighbours.

# WELCOME

Thank you for joining us at the Arts Club’s Granville Island Stage for Mark Crawford’s *The Golden Anniversaries*. We’re so happy that you’ve joined us, and we hope this visit inspires you to come back to see live theatre at the Arts Club again.

Mark Crawford has written a story that understands something fundamental about long relationships: that love is rarely tidy, often absurd, and sustained as much by compromise and habit as by romance.

For the Arts Club, producing Canadian work like *The Golden Anniversaries* is central to our mission. We believe that our stages should reflect the complexity, humour, and contradictions of the communities we serve. As a not-for-profit theatre company, we are committed to providing a platform for Canadian voices and stories that resonate with our community.

If you aren’t a season-ticket holder already, please consider getting a package now to ensure you have a calendar of theatrical entertainment lined up for your enjoyment, in the best seats! You can see our full 2026–27 season at [artsclub.com](https://artsclub.com) at the start of March, or subscribe now by calling our box office at 604.687.1644.

Enjoy the show!



**Ashlie Corcoran** Artistic Director  
**Peter Cathie White** Executive Director

The Arts Club gratefully acknowledges  
Play Patron Lyrica and Jack Bradshaw.



**LOCAL BREAKING NEWS  
ANYTIME, ANYWHERE**



**CLICK HERE TO  
DOWNLOAD THE  
CTV NEWS APP**

# DIRECTOR'S NOTES

I am so honoured to be part of this team, and I'm so grateful to Ashlie and the Arts Club for inviting me to direct Mark Crawford's beautiful script. This production is a love letter to love itself. So, I thought it would be fitting to share some thoughts/advice/ponderings/wonderings on love from the creative team. All love is, all love can be. How to fall in love every day, and nurture it over lifetimes. How to love deeply, and allow yourself to be loved by someone who sees you—like, *really* sees you. How to hold love close, and how to let it go.

*“I'm happiest thinking of love as a verb, not a noun.”*

—Peter (Glen)

*“Always be their friend, even when that's hard.”*

—Eileen (Sandy)

*“When you know, you know—and that knowing is a thing that will transform over time. Let yourself always be curious to the ways that knowing evolves.”*

—Alexandra (Lighting Designer)

*“If you feel like you haven't found it, don't stop looking for it. And if you feel like you've found it, don't stop trying to keep it.”*

—Ryan (Set Designer)

*“The best part about being in love is having someone you want to tell everything to, share every experience with, and look to first whenever you start to laugh. When things feel hard, finding joy in these little shared moments in a relationship is, for me, a wonderful place to fall back on and feel safe in.”*

—Maddie (Costume Designer)

*“Love what you do, do what you love, and try to find someone to have fun with.”*

—Rick (Sound Designer)

*“Go all in. Who knows, this could be ‘the one,’ but if they're not and the relationship comes to an end. Their role wasn't to be ‘the one,’ but to help you evolve, so when you meet ‘the one’ you've gained a better understanding of what you want in your person and your relationship and what you need to work on for yourself and what you're going to bring to the table for next time.”*

—Ronaye (Stage Manager)

*“It's simple but hard to do. It's showing up wanting the best for the other person, and knowing sometimes it might not be you.”*

—Arthi (Director)

The world can be dark at times, but love and community carry us forward. So, I invite you all to hold the hearts of Sandy and Glen with you as you move through your life—to remember all the love you hold, and offer it fully to others.

**Arthi Chandra**

# Q&A WITH PLAYWRIGHT MARK CRAWFORD

**Arts Club: What was your inspiration for this play? How did your ideas for the characters, Sandy and Glen, and their story take shape?**

**Mark Crawford:** A few different things inspired this play. I love actors, especially senior actors, and wanted to write two great roles for actors in their golden years. I was also inspired by reading plays or novels that take place over a long period of time. I wondered: how could I craft a play that runs under two hours, but spans fifty years? That got me thinking about memory: what do we remember, what do we forget, and how do two people’s memories align or differ? As for Glen and Sandy, they have a few traits I’ve “borrowed” from people I know, but on the whole, I made them up! The writing process for this play was a combination of careful planning, trial and error, and often just allowing this couple to reveal themselves to me through the dialogue.

**AC: Why did you decide to limit the cast of characters to just the two of them? Did you know early on in this play’s development that it would be a “two-hander”?**

**MC:** I knew very early on that the play was going to be a two-hander. I wanted to put the focus squarely on these two people and their relationship. As in life, they talk about a lot of other “off-stage” characters: family, friends, neighbours. But I felt that in order for the play to be about them and their marriage, it would work best with only Glen and Sandy on the deck.

**AC: Arts Club audiences have recently enjoyed your plays *The Birds and the Bees* and *Bed and Breakfast*. How do you feel *The Golden Anniversaries* builds from, or relates to, those earlier shows?**

**MC:** These plays do share common ground: they’re all set in the here-and-now, they all have a romantic relationship at their core, and (I hope) they all make you laugh as well as feel something deeper. *The Golden Anniversaries* plays with time and memory, so its structure and theatrical language is different from those other plays. Many people have commented that it’s a more “mature” play. Maybe that’s due to the age of the characters, or maybe it’s me being a more experienced writer, or maybe I’m finally growing up!

**AC: There seems to be something rather distinctively, though not obviously, *Canadian* that runs through your work? Is creating a particular sense of place or culture, evoking Canada, something you’re conscious of as you create and develop plays?**

**MC:** A common piece of advice for writers is: in order to talk about something universal, you need to get specific. I tend to ground my plays in the world in which we live, with the hope that these specific characters and specific situations allow me to explore bigger themes and ideas. I also like the audience to feel like they can relate to the people on stage. Glen and Sandy could be people you know. They could even be you!

**AC: What project, or projects, are you working on now? And what’s up next?**

**MC:** My newest play just had its world premiere in December—a family holiday show called *Ruby and the Reindeer*. I have a few other writing projects at different stages of development, including a new play I’ve just started. And as an actor, I’m about to go into rehearsal for a production of *Murder on the Orient Express* at Theatre Aquarius in Hamilton.



# THE COMPANY

listed in alphabetical order



**Peter Anderson** Glen

**For the Arts Club** *Rattle in the Dash* (debut, 1986); favourites: *7 Stories*, *Waiting for Godot*, *The Anger in Ernest & Ernestine*, *Flying Blind*, *Don*

*Quixote*, *The Waiting Room*

**Other Theatre** *The Overcoat*, *Beauty and the Beast: My Life*, *Middletown*, *Titus Bouffonius*, *Butcher*, *The Coyotes*, *Law of the Land*, numerous Leaky Heaven Circus productions, and *The #14*

**Other** The recipient of nine Jessie Awards and multiple nominations, Peter is delighted to be back at the Arts Club. He is a graduate of the University of Michigan and the Dell’Arte School of Physical Theatre, and a founding member of the Caravan Farm Theatre, for whom he has written 14 plays and performed in many shows. *Love to Melody—7 more years and we’re golden!*



**Eileen Barrett** Sandy

**For the Arts Club** *It’s a Wonderful Life*

**Other Theatre** *Dance Nation* (The Search Party); *Escaped Alone*, *Seventeen* (Western

Gold); *Les Belles-sœurs* (Gateway/Ruby Slippers); *The Duchess* (Ruby Slippers); *Harvest* (Gateway)

**Film & TV** *Family Law*, *Resident Alien*, *Wild Cards*, *Riverdale*, *Elle*, *The Good Doctor*, *The Magicians*

**Other** Eileen loves working as a Vocal Eye describer (for blind and partially sighted theatre-goers). She has a Jessie Richardson theatre award and two nominations. She has a Liberal Studies M.A. from SFU, and is a really old Studio 58 graduate. *Eileen is thrilled to be part of The Golden Anniversaries team. Love to Robert, Matthew and Garnet.*



**Alexandra Caprara** Lighting Designer

**Arts Club Debut**

**Other Theatre** selected credits: lighting design for *Middletown* (Jessie

Nominated, Pacific Theatre); *Song from the Uproar* (City Opera Vancouver); *New Age Attitudes* (Theatre Replacement); *Loss Machine* (HOLGO); video design for *Silent Howl* (Dancing on the Edge); direction of *Ultra Violets* (re:Naissance Opera)

**Other** MFA graduate from Simon Fraser University. *Thrilled to be a part of this brilliant team!*



**Arthi Chandra** Director

**Arts Club Debut**

**Other Theatre** Arthi Chandra has directed and produced with many companies in both BC and Ontario (Bard on the Beach, The Shaw Festival, Theatre Replacement, The Chop Theatre, Studio 58, Pacific Theatre, UBC, and more).

**Other** Arthi Chandra is a very serious director, writer, and lesbian based out of Vancouver, BC. Arthi teaches devising and directing at the post-secondary level and enjoys it very much. She graduated from Simon Fraser University’s School of Contemporary Arts; was recently part of WhyNot Theatre’s ThisGen fellowship; and is an Associate Artist at Theatre Replacement. She is the happiest while cooking or gardening.



**Rick Colhoun** Sound Designer

**For the Arts Club** *Dolly*

*Parton’s Smoky Mountain Christmas Carol* (2021/22 and 2024/25), *Elf: The Musical*, *‘da Kink in my Hair*, *Guys & Dolls*, *Primary Trust*, *Ring of Fire*, *You used to call me Marie...*(Tour)

**Other Theatre** *West Side Story* (CTORA); *The Trip to Bountiful* (United Players); *A Case for the Existence of God* (Pacific Theatre); *Shawshank: The Musical* (District 13)

**Other** Jessie award winner and three-time nominee. *Rick thanks all who make live theatre happen!!*



**Ryan Cormack** Set Designer

**For the Arts Club** *Jersey Boys*

**Other Theatre** selected credits: *Annie*, *Oliver!* (Gateway Theatre); *The*

*Complete Works of William Shakespeare [abridged] [revised] [again]*, *The Dark Lady*, *The Comedy of Errors*, *Measure for Measure* (Bard on the Beach); *Elf* (Chemainus Theatre Festival); *Yaga* (Touchstone); *The Time Machine*, *Fourplay* (Studio 58)

**Other** Graduate of The Dan School of Drama and Music; studied set and costume design at The National Theatre School of Canada.



**Mark Crawford** Playwright

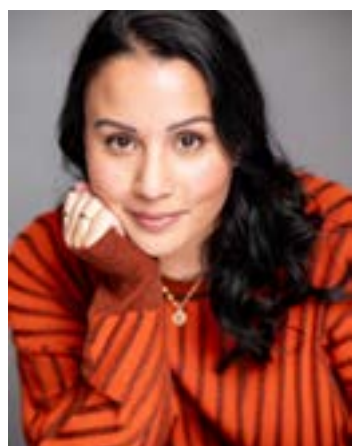
**For the Arts Club** Playwright of *The Birds and the Bees*, Playwright and Performer in *Bed and Breakfast*

**Other Theatre** One of Canada’s most popular playwrights, Mark’s work has been produced across the country and internationally. He is the author of *Stag*



*and Doe; Bed and Breakfast; The Birds and the Bees; Boys, Girls, and Other Mythological Creatures; The New Canadian Curling Club; Chase the Ace; The Gig; and The Golden Anniversaries.* His newest play, *Ruby and the Reindeer*, premiered in December at Stratford's Here for Now Theatre. Many of Mark's plays are published by Scirocco Drama. For Vancouver Opera, Mark wrote new dialogue for their 2024 production of *Die Fledermaus*. Also an actor, Mark has performed from coast to coast. Recent credits include: *Liars at a Funeral* and *Crazy for You* (Drayton Entertainment); *A Christmas Story, The Musical* (Theatre Aquarius); *By the Light of a Story* (Theatre Orangeville); *Harry Potter and the Cursed Child* (Mirvish Productions).

**Other** markcrawfordplays.com



**Lisa Goebel** Intimacy Director

**For the Arts Club** *Mom's the Word: Talkin' Turkey, Someone Like You, Choir Boy, Father Tartuffe, Red Velvet, Sexy Laundry, Guys & Dolls,*

*Miracle on 34<sup>th</sup> Street, Ring of Fire, Waitress, A Doll's House, Disney's FROZEN, Louisa May Alcott's Little Women*

**Other Theatre** choreographer/intimacy director for *Bright Star* (GTP/Mirvish), *The Dark Lady* and *Hamlet* (Bard on the Beach), *Pride & Prejudice* (Western Canada/Gateway); intimacy director for *Flight* (Vancouver Opera), *Yaga* (Touchstone), *Starwalker* (Urban Ink)

**Other** Lisa is a certified intimacy director through Intimacy Directors and Coordinators, and a proud Studio 58 grad.



**Emma Graveson** Apprentice Stage Manager

**For the Arts Club** *Sexy Laundry* (apprentice SM)  
**Other Theatre** *The Shape of a Girl* (Green Thumb -

Stage Manager), *A Taste of Hong Kong* (Pi Theatre with vAct - Apprentice Director and Production Assistant)

**Other** Emma (she/her) is an arts worker based on the unceded lands of the x̣m̄əθḳ̓əỵəm, Sḳwx̣wú7mesh, and səlilwətał Nations. She shares much thanks to her family, as well as to the many mentors she has had along the way, for their constant support, enthusiasm, and guidance!



**Ronaye Haynes**  
Stage Manager

**For the Arts Club** *Miss Saigon* (debut, 2005); recent favourites: *Ring of Fire, Sexy Laundry, 'da Kink in my Hair,*

*Ring of Fire* (On Tour), *The Mousetrap Other Theatre Classic Country Roads, Miss Bennet: Christmas at Pemberley* (Chemainus Theatre Festival); *Top Girls* (Vancouver Playhouse); *Brighton Beach Memoirs* (Gateway Theatre); *Star Trick: The Musical* (Vancouver TheatreSports League); *The Real Thing* (Belfy/ACTC); *Bed & Breakfast* (Globe, ACTC, GTC); *2 Pianos, 4 hands* (Marquis Entertainment)



**Madeleine Polak** Costume Designer

**Arts Club Debut**  
**Other Theatre** *Saint Joan of the Stockyards, The Very Book Indeed, The Festivities* (UBC

Theatre); *An Ideal Husband* (United Players of Vancouver)

**Other** Madeleine is a graduate of the UBC Theatre Design & Production program, and is thrilled to be making her Arts Club debut! A firm believer in wearing multiple hats, she is active as both a stage manager and costume designer.



A group of young performers, mostly teenagers, are on a stage. They are wearing black t-shirts and pants. Some are standing in the back rows, while others are kneeling or sitting in the front. They appear to be in the middle of a performance or rehearsal, with some looking towards the camera and others looking off to the side. The stage is dark, and there are some stage lights visible in the background.

# **Our Musical Theatre Intensive applications are now open!**

Aimed at young artists (ages 12–19) with a passion for singing, dancing, and acting, the Arts Club’s Musical Theatre Intensive (MTI) exposes students to the kind of rigorous training typically found only at the post-secondary level and begins a journey toward becoming a true “triple threat” (actor/singer/dancer).

---

Junior MTI: Jul 6–Jul 17, 2026

Senior MTI: Jul 20–Aug 7, 2026

Applications close Apr 26, 2026.



ARTSCLUB  
THEATRE  
COMPANY





# APOLLO RESTAURANT

A GREEK RESTAURANT SPECIALIZING IN  
MAINLAND CUISINE LOCATED JUST STEPS  
FROM GRANVILLE ISLAND.

1830 FIR STREET  
VANCOUVER, BC  
604-736-9559

EST. 2002



VANCOUVER SUN IS A PROUD SUPPORTER  
OF THE ARTS CLUB THEATRE COMPANY

# Stay informed with VANCOUVER SUN



Get **unlimited access** to  
news, arts, life and more.

~~\$119.94~~ **\$1** for 6 months

**SUBSCRIBE NOW**

CANCEL ANYTIME



# CORPORATE & GOVERNMENT SUPPORT

## VENUE SPONSORS

---



## SEASON SPONSORS

---



## PRESENTING SPONSORS

---



## PRODUCTION SPONSORS

---



## PERFORMANCE SPONSORS

---



## TECHNOLOGY SPONSORS

---







Bell Alliance LLP is a Vancouver law firm on the Broadway corridor, that helps people with residential and commercial real estate transactions, estate planning and administration, corporate and business law, and immigration.

604.873.8723 | INFO@[BELLALLIANCE.CA](mailto:info@bellalliance.ca)  
SUITE 201-1367 W BROADWAY  
VANCOUVER, BC, CANADA V6H 4A7

**bell alliance** LLP

A personal approach to law



COMMUNITY PARTNERS



EVENT SPONSORS



GOVERNMENT SUPPORT



ADDITIONAL PARTNERS

Anna’s Cake House BMO Nesbitt Burns Clear HR Consulting Eddie's Hang-Up Display Ltd. Legacy Liquor Store	Marin Investments Limited Mercury Launch & Tug Ltd. Tremblay Motors West Coast Title Search Ltd.
--	---

FOUNDATIONS

Anako Foundation George and Donna Battye Fund, held at Vancouver Foundation Beech Foundation Canada Gives Charles and Eve Chang Foundation Christopher Foundation Connor, Clark & Lunn Foundation Diamond Foundation Kaatza Foundation The Hamber Foundation Edith Lando Charitable Foundation Frank and Joan Lew Charitable Trust Lightburn Family Fund, held at Vancouver Foundation Lohn Foundation Longhedge Foundation Andrew Mahon Foundation Mair Foundation, held at Vancouver Foundation McCarthy Tétrault Foundation The McLean Foundation Moffat Family Fund F.K. Morrow Foundation Nanji Family Foundation	Marion Pearson and Jim Orr Fund, held at Vancouver Foundation Alan and Gwendoline Pyatt Foundation The Raven Foundation The Rix Family Foundation The RBC Foundation Derek & Johanna Rundell Fund, held at Vancouver Foundation The Simons Foundation Canada Somerset Foundation Andrea Stolte Foundation Tides Canada Foundation Vancouver Foundation The Dennis & Phyllis Washington Foundation
---	--



# DONORS

The Arts Club Theatre Company relies on your philanthropic support to ensure the strength and vitality of the company. As a non-profit organization, the Arts Club would not exist without the generosity of our individual donors—thank you for your support! We endeavor to include all patrons at the Thespian level or higher who wish to be listed. If you feel you have been omitted in error, have questions or concerns, or wish to make a donation, please contact our Development team at 604.687.5315, ext. 847. *\*indicates 5+ years of giving*

## LEGACY GIFTS

Estate of Byron Aceman  
Estate of Doris Chillcott & Bruce Granville Payman  
Estate of Muriel Kathleen Don  
Estate of Judy Forsberg  
Estate of Margaret Geraldine (Gerry) Gibb  
Estate of Twyla Graeme  
Estate of Ardis Janzen  
Estate of Lorna Jean Klohn  
Estate of Mary Sharon MacLean  
Estate of Timmie Marr  
Estate of Mary Newman  
Estate of Robert Osokin  
Estate of Myfawny Lyn Roddis  
Estate of Mollie Elizabeth Catherine Thackeray  
Estate of Louise Chen Utengsu  
Estate of Arlene Vivian  
Estate of Estate of Ian Waddell  
Estate of Elizabeth Blythe Walker  
Estate of Barrie Wharton

## LEGACY CIRCLE

Robert & Enneke Allan  
Corinne Assayag  
Candace Bailes  
Richard Bell  
Philip & Donna Bernard  
Kim Bittman  
Boivie Family Fund  
Susan M. Boyce  
Jack & Lyrica Bradshaw  
Patricia & David Breen  
Monica Burns  
Grant Burnyeat  
Josephine Chanin  
Judith Coffin  
Ashlie Corcoran  
Sheila Cox  
Judi & Don Curtiss  
Vicki Cuthbert  
Dr. Kathleen Dahlstrom  
Sam & Elizabeth Dunbar  
Wilson Durward  
Bill & Sandra Epplett  
Fay Fergusson  
Bruce & Dale Flexman  
Teddy Forsyth  
Malcolm Frances  
Stephanie Hargreaves  
Penny Harris  
Linda & James Harrison  
Jack Holmes  
Brenda Hudson  
J.M. Hurst  
Dr. Ronald Jobe  
Linda M Johnston  
Bruce Kellet  
Carla Kreklau  
Marvin & Irma Lamoureux  
Bonnie Mah  
David & Sofia Massie  
Bryan Mabee & TerriLynn Ray  
Diane McConnell  
Betty McGowan  
Nora McLellan  
Bill Millerd & Marsha Sibthorpe

Christine Mills  
Dennis & Kathryn Morris  
Susan Morris  
Susan Mueller  
Gloria & Floyd Murphy  
Gaylene Newman  
Norine Pihowich  
Todd & Valerie Prodanuk  
Joanne Pugh  
Lorraine Redmond  
Derek & Johanna Rundell  
Janet Rogers  
Alfred Schultz & Leona Kolla  
Robert Sharman  
Tom Sigurson  
Donia Sims  
Jo-Ann Ternier  
D. Marion Thomas  
Wendy Thorburn  
Jamie-Lynn Versteeg  
Peter Cathie White  
Terry Whitehead  
Anthony & Noreen Willingdon  
Anonymous x37

## VISIONARIES

Gary Anderson  
Roberta Lando Beiser\*  
Lyrica & Jack Bradshaw\*  
Grant D. Burnyeat\*  
Jamie & Margaret Corbett\*  
Wanda Costuros & Doug Whitehead  
Frances Dowdeswell\*  
Dale & Bruce Flexman\*  
Christopher & Anya Gimpel\*  
Stan & Kathy Hamilton\*  
Frank Hansen  
Doug & Margaret Hatlelid\*  
Don Lindsay & Jennifer MacKenzie  
Logan & Park Family Fund, held at Nicola Wealth PGF  
Longhedge\*  
Bonnie Mah\*  
Bill Millerd & Marsha Sibthorpe\*  
G. Murphy\*  
The Neijens Family Charitable Fund  
Karen Nordlinger  
John & Judy Taylor\*  
Art Vertlieb & Bev Briscoe\*  
Mr. Shawn Williamson\*  
Charles & Dale Young\*  
Anonymous x3

## TRANSFORMATIONAL

Mary Basas  
David & Edith Camm\*  
Dr. Kate Dahlstrom\*  
Neil Duke & Candace Yip\*  
Glenn Powers & Melanie Wong Foundation Fund held at MakeWay Foundation  
Dr Tim & Hilary Temple\*

## INNOVATION

Brian Angus & Dorothy Stauffer\*  
Bob & Elizabeth-Anne Armstrong  
Corinne Assayag, WorldExposure.com\*  
George & Donna Battye Fund, held at the Vancouver



Sandman Suites Vancouver - Davie Street

A family of four (mother, father, and two children) are sitting on a teal sofa in a modern hotel suite. They are looking at a map together. The room has a large abstract painting on the wall, a floor lamp, and a coffee table with a plant and a coffee cup.

Official  
Accommodation Sponsor

Arts Club Theatre Company

Looking for a comfortable stay in one of Canada's top destinations? With over 55 hotels across the country, Sandman Hotel Group offers accommodations in prime locations from coast to coast. Committed to quality and exceptional service, Sandman ensures every stay is a memorable one.

For the best rates  
and exclusive offers

**SANDMANHOTELS.COM**



Foundation\*  
D. Bell & M. Sim\*  
Richard Bell  
Robert Bennett, in memory of Miriam\*  
Philip & Donna Bernard\*  
The Boivie Family Fund\*  
Val & Dick Bradshaw\*  
Fred & Dawn Cadham\*  
Marnie Carter\*  
John & Carol Dawson\*  
Patricia Mae Fulton\*  
Elaine Hunter & Bruce Watt\*  
Trish & Brian Hurl  
J. M. Hurst\*  
Mavis & Carl Jonsson\*  
Bill Koch & Margaret Kendrick\*  
Irma & Marvin Lamoureux\*  
Bill & Risa Levine  
Frank and Joan Lew Charitable Trust  
Bryan Mabee & TerriLynn Ray\*  
Maureen L. MacDonald\*  
Kathy & John MacKenzie\*  
Marilyn & Murray MacKenzie\*  
Janet & Scott McCloy  
Jim McLean & Ken Lee\*  
Christine Moffat  
Lisa & Brad Newby\*  
Tea Nicola  
In Memory of Helen Ana Nogatch  
Janet Rogers\*  
Andre & Brock Rowland\*  
Robert Sharman\*  
Alfred C. Schultz & Leona Kolla\*  
Beth Shumka  
Peter & Karen Stephen\*  
Terry Whitehead\*  
The Windsor Family Fund, held at United Way of the  
Lower Mainland\*  
Anonymous

**COMMUNITY IMPACT**

Chris & Susan Adams\*  
Cheryl Basarab  
Scott & Dorothy Bell\*  
Paul Bennett & Catherine Olsen  
Julia Blockberger\*  
Marilyn Books & Terry Prendergast\*  
Marc & Kelly Bourne\*  
Jim & Mary Clare Bovard\*  
Wayne L Brown  
Jamie & Cindy Bruce  
M. & F. Bylsma\*  
Elaine & Ken Carty\*  
Peter Cathie White & Douglas Seifert  
Ron Cheung  
Axel & Millie Conradi\*  
Sherry Copeland\*  
Ashlie Corcoran  
Anna Das  
Brian Edwards  
Sandra & Bill Eppllett\*  
Sarah Tutton Frost\*  
Anna K. Fung\*  
Judy Garner\*  
Karen Gilmore & Rob Van Nus\*  
Victoria I. Graham\*  
Cathy Greer  
Hanbury Family\*  
Sandra Harbridge  
Gordon Harding  
Tinker Harris  
Catharine G. Herb-Kelly\*  
Jack Holmes, in memory of Sibel Thrasher\*  
Norm Hotson & Barbara Lindsay\*  
Louise & Don Hutchinson\*  
Sharon Jeroski\*  
Al-Karim Kara  
Rudy & Elizabeth Kerklaan\*  
Eugen Klein\*  
Alice and Larry Laberge  
D. Wendy Lee\*  
Lindsay Family Fund, held at Vancouver Foundation

John & Jane Macintyre\*  
Marlene & Alec MacKenzie  
David Massie  
Heather McKay\*  
Rob & Sarah McLeod\*  
Allan McMordie  
Susan Mendelson & Jack Lutsky  
Brenda Mendieta & John Singleton Fund, held at Nico-  
la Wealth PGF  
Mike & Leanne Moretto\*  
Catherine Morgan & Michael Jonker\*  
Ian & Louise Mummery\*  
Carol Newson\*  
Morris Nord & Fiona Macdonald\*  
Jay Ono  
Todd & Valerie Prodanuk\*  
Ellis Ripley Trafford & Michael Walker\*  
William D. Robertson\*  
Amanda Rogers  
Lynne & Don Rose  
Elizabeth Snow  
Andrea Stolte\*  
Maryann Sully-Daniels, In Memory of Edward Sully  
Wendy Sutton\*  
Vincent & Marie Zelig Tan  
Linda Toriel, In memory of Paul Toriel\*  
Susan Van der Flier  
Tino Varelas\*  
Adam Whitcombe & Susan Forbes\*  
Kelleen Wiseman  
Daniel Worsley\*  
Deb & Jim Yeates  
Jennifer Yeung\*  
Carol Young  
Paddy & Howard Young\*  
Audrey Zaharichuk  
Anonymous\* x3  
Anonymous x5

**BENEFACTOR**

Dr. Joy E. Alexander\*  
Elizabeth & Paul Beckmann\*  
Brendan & Karly Black\*  
Elizabeth J. Burrell\*  
Graham & Darlene Cameron  
H. Campbell & M. Zaine\*  
Ellen & Paul Challinor\*  
Chris & Lisa Dabrowski\*  
Leith Dewar & Jennifer Baird  
Rachel Drance  
Linda Elliott  
Marlene Enns  
William Galloway & Susan Freedman\*  
Rick Gammer  
Mary Ellen Graham in memory of David Graham\*  
Loree Gregg\*  
Claudio Grubner  
Helen Hansen  
Richard & Carolyn Hart  
Marie Kereliuk  
Mary Kippenhan  
Murray & Tricia Leith\*  
Jane Mortifee\*  
Natalie Quilty  
Dietmar Raudzus, in memory of Brigitte Raudzus\*  
Jane E & Russ Reid  
In memory of Shirley Ripley  
Kathie Schwaia\*  
Chris Silvan  
LaVonnie Steger\*  
Eileen B. Stewart\*  
Laurie Stovel\*  
Dr. Ian & Jane Strang\*  
Garth & Lynette Thurber  
Art Toft\*  
Andrew Walker, in memory of Ian Dowdeswell  
Winston and Donna Yee Family Foundation  
Anonymous\* x3  
Anonymous x3

**PRODUCER**

Thomas & Catherine Adair\*

Maureen Adams\*  
Howard & Donna Aldous  
Janet Allwork\*  
Amney Amery  
Gerrit Aronson  
David & Heather Ashley\*  
Marie Baird  
Wendy G Baker  
Bernadette Banares  
Anne Beaulieu & Rob Booker\*  
Espie Belen Polkinghorne  
Dr. Victoria Bernstein\*  
Carolyn Bird\*  
Jean Blake  
Paula & Gordon Boleen  
M. A. Boltezar\*  
Ruth Brodie\*  
Deborah Brown & Arthur Harpur\*  
Penny Bruin  
Chuck & Diane Campbell\*  
Doug & Lynn Campbell\*  
Hana Carbert  
Peter Chapek  
Peter Cheng & Vincent Wheeler  
Chin's #boysclubbyvr\*  
Dorothy M. Copp\*  
P. J. Curtis\*  
Valerie Dahl & Tony Traboulsee\*  
Gregory Deans\*  
Valerie Denike  
Lydia deSousa\*  
Jane D.\*  
Wilson Durward\*  
Mike & Lynda Fahrman\*  
Sandra Fairey  
Janet Fraser\*  
Richard A. Fraser  
Susan Fugman  
Myrna Geib  
Dennis Goodman\*  
Vincent Hanemayer & Margaret Shaw\*  
Richard Hankin & Heather Jones Hankin\*  
Stephen Heatley\*  
Joan & Trevor Heaver\*  
John Horning  
Teresa Black Hughes & D Lee Hughes  
Jenn & Karl\*  
Dr. Ronald Jobe\*  
Marni Johnson & Gordon Roberts\*  
Linda Johnston\*  
S. Jones  
Stephen & Mary Ann Juras\*  
Susan Keller  
Jacqueline Kelly & Rowland McLeod\*  
Louise & Gary Kenwood  
Marylou & Tom Kirstein\*  
Esther Leung\*  
Erica Levy & Alan Kingstone\*  
Margaret Li  
Suzanne & Greg Lonsbrough\*  
Dr. Edward & Sharon Lowe\*  
Linda Lowry\*  
Mary MacDonald & Blaine St. Arnault\*  
Randy & Cinda Mackoff  
Anne Mathisen\*  
Jane & Ian Mavety\*  
Terry & Sandy McBride\*  
Debbie McCloy  
Betty McGowan  
Harvey McKinnon  
Deborah & Stephen Meehan\*  
S. Mercer  
Drs. Patricia & Martin Milewski\*  
Kathryn & Dennis Morris  
Nancey & Noordin Nanji  
Gaylene Newman\*  
Rena Newton  
Troy Nimetz  
Carol Oleksiuk  
Donna L. Ornstein\*  
Jean Orr\*

Kristina Paule  
Philip Pincus  
Art & Myrna Poisson\*  
Russel & Barb Quinn, in memory of Ivan & Jane Quinn\*  
In Memory of Nik Radosevic  
Allan & Blaize Reich\*  
Marian Reid  
June & Hugh Richardson  
Heather Risk\*  
D & D Rollins\*  
Eleanor Boyle & Harley Rothstein\*  
Hilary Rousseau\*  
Stuart & Trina Rowles  
Sonja Sanguinetti\*  
Gail Screaton\*  
Sedore Family  
In memory of Betty Shandro\*  
Helen & Barry Thorson\*  
Chris & Pat Tipple  
Jacqui Tyler\*  
Joseph Varesi  
Ralph & Valerie Wettstein  
Peter & June Young Legacy Fund, held at the Vancouver Foundation\*  
Anonymous\* x9  
Anonymous x11

**THESPIAN**

M. Oluwafemi Agbayewa  
Helen Alko\*  
Robert & Cora Ashburner  
Sally & Kenneth Ball\*  
Elizabeth Barlow  
Gillian Beattie\*  
Deb Berto & Dan Sanderson\*  
Gordon & Cheri Bird\*  
Julie Bournival\*  
Jim & Nancy Boyle\*  
Claus Braovac  
Janice Brown\*  
Ruby Campbell  
Donna Celle  
Valentina Cesaratto\*  
Lorna & Cliff Chan-Yan\*  
Adrienne Chan\*  
Josephine Chanin  
C & P Chung\*  
Kenny Cormier  
Christian Daudt\*  
In memory of, Rose Marie C Davis & Shirley Mae Ades  
Dr. Keith Dawson  
Harriet Dean\*  
In memory of Brenda Derbyshire  
Nedra Dickinson  
Earl Ellett\*  
Beverly Epp\*  
Jean Ferguson  
Judy Finch\*  
Beverly Forzley  
Marlene & Norman Franks\*  
Ka-Lok Fung  
Tristen Gilchrist & Adam Hyslop  
Sylva Giroux\*  
Dr. Burt & Mrs. Nora Goldstein  
Daryl Gouthro\*  
Colin Gray & Liza Hutchison\*  
Linda & Lawrence Haley\*  
Janis Halliday  
Dr. Evelyn J. Harden in memory of John Wood\*  
In Memory of, Scott Harris  
Roberta Higgs  
Dorothy & Dennis Holmes  
Brenda Horner  
Brenda Hudson\*  
John Illes  
Alex & Leah Jackson  
Jim & Monita  
Betty Jung\*  
Sharon Kahn & Barrie MacFadden  
Ameen & Bev Kanji\*  
Peter Kappel\*  
John Kearns & Daphne Hampson



Great theatre  
lives here.

BMO



BMO is proud to support **Arts Club Theatre Company** and the artists that are captivating audiences with exciting, innovative, and entertaining productions.

We are pleased to be the presenting sponsor of **Community Partner of The BMO Radar: New Works in Progress.**



Robert & Raymonde Kendrick\*  
Patricia Kennedy  
Doug & Laurie Lakusta  
Gisa Cole Laslo\*  
Dr. & Mrs. Ernie Ledgerwood\*  
Linda Lee & Michael Mulhern  
Lorne & Audrey Lindsay\*  
Maureen & Gerry Lister  
Kenneth MacLeod & Elizabeth Black\*  
John Malcolm  
Michael Martino  
Jeff & Valerie Marus\*  
Dr. Kavita Mathu-Muju  
Sandi McIntosh-Kocaba\*  
Mrs. Verna McNichol\*  
Ken & Irene Merrells\*  
Amanda Millar  
Bruce & Lea Milley\*  
Robert Brian More\*  
Christine Nguyen  
Barbara Norman\*  
Kathie Orchard\*  
Stephen & Pamela Ottridge\*  
Rita Parikh  
Nick & Hazel Parker-Jervis\*  
Patricia Patterson  
Henriette Pieron  
John & Bev Price, in memory of Gail Weitzel\*  
Sally Quinn  
Barbara & Mark Rebagliati  
F. Regan-Pollock\*  
Keith & Maureen Reid\*  
Manji & David Sidoo  
Ailsa Siemens\*  
Sandi Strate\*  
Michele & Wayne Sutherland  
Beverley Tamboline\*  
C.A.T. Family  
Peter & Carol-Lyn Thaler\*  
Heather & Robert Thompson\*  
Ann True  
Chrys & George Tsiknis  
Vivian & Barrie Urquhart\*  
Margaret Uzelac  
Shelagh Van Kempen\*  
In honour of Art Vertlieb & Bev Briscoe  
Rosemary & Robert Wakefield  
J. Walsh\*  
Ellen Wattam\*  
Linda Weber  
Carolyn Ann Webster\*  
Andrew Wheeler  
Pamela Whittall & Ed Beange\*  
Dr. Jamison & Ms. Ellen Wilcox  
In Memory of, Carol Wilkes  
Paul Witt  
Jane & Maurice Wong, In Memory of Shelley Superstein  
Dr. Paul C. Wong  
Vincent Wong  
Shannon & Kate Zanon  
Dana Zendrowski  
Anonymous\* x4  
Anonymous x13



# VOLUNTEERS

As a not-for-profit charity, the Arts Club is grateful for our many committed volunteers, who share their time, enthusiasm, and talent with us. Volunteers play an invaluable role in the success of our company. Thank you!

Irina Adam  
Rati Arora  
Sue Bates  
Rochelle Belfon  
Vesna Bokic  
Ingrid Broussillon  
Eric Budgell  
Vickie Carter  
Marcus Chan  
Pam Chow  
Sabrina Christie  
Fran Cole  
Sheldon Cole  
Erica Comacchio  
Meg Comiskey  
Rudi Corbett  
Rita Danielle  
Craig Davidson  
Maxine Davidson  
Sofia Difato  
Luiza Draganska  
Cole Dudley  
Willow Eady  
Yris Foul  
Gail Franko  
Gail Fraser-Chin  
Carlton Gee  
Jasper Gillard  
Linda Gray  
Lisa Gray  
Ana-Francisca Haas  
Jeanne Harkness  
Susan Harman  
June Harrison  
Linda Hewitt  
Tiana Hu  
Janet Johnston  
Allison Kassab  
Glory Kinoshta  
Liz Landon  
Susi Lawless  
Thomas Lim  
Shona Lobo  
Kate Maclean  
Lisa Maclean  
Richard Mar  
Michael Marissen  
Kathie Marteinsson  
Betty McGowan  
Craig Mckee  
Susan McNeil  
Vania Mello  
Eve Mendes  
Nancy Meyer  
Donalda Meyers  
Marilyn Miles  
Fran Moore  
Kathy Murphy  
Celia O’Neill  
Donna Osiowy  
Adele Peters  
Kristen Ramsden  
Sarah Rowland  
Ana Salas  
Alicia She  
Glenda Sherlock  
Karen Shimokura  
Peter Silin  
Chrissy Smith  
Aarti Srinivasan  
Dina Sudlow

Gail Sumanik  
Ursula Sygusch  
Loralei Teetzen  
Anne Tickle  
Lillian Tom  
Garett Toporowski  
Judy Toy  
Lesley Walker  
Claire Westlake  
Gillian Wilson-Haffenden  
Anneliese Wong  
Iilir Xhediku  
Elva Xu  
Zuer Zhong



# BOARD & STAFF

**Artistic Director** Ashlie Corcoran  
**Executive Director** Peter Cathie White

## BOARD OF DIRECTORS

**Chair** Bev Park, FCPA/FCA, MBA  
**Vice Chair** Susan Van der Flier  
**Immediate Past Chair** Wanda Costuros, CPA (CMA), MBA  
Patrick Anderson, Jack Finn BHA, JD, Cathy Greer, Alexia Jones, Al-Karim Kara, MBA, FCPA, FCMA, C. Dir., Natascha Kiernan, J.D, ICD.D, Ada Lam CPA, CA, ICD.D, FEA, Ken Lee, Harvey McKinnon, Lakh Multani CPA, CA, Natalie Quilty, Amanda Rogers MA, JD, LLM, Amin Sunderji, Melanie Wong

## COUNCIL OF PATRONS

Roberta Beiser, Richard Bell, Philip Bernard, Donna Celle, Axel Conradi, Jamie Corbett, Bruce Flexman, Christopher Gimpel, Dr. Stanley Hamilton, Catharine Herb-Kelly, QC, Bryan Mabee, Bonnie Mah, Bruce Milley, FCA, Morris Nord, Joan Pitman, Janet Rogers, Al C. Schultz, Lisa Seed, Jim Storie, John J. Sutherland, Art Vertlieb

## ARTS CLUB OF VANCOUVER THEATRE FOUNDATION

**Chair** Glenn Powers  
**Treasurer** John Dawson, FCPA/FCA  
**Directors** Wanda Costuros CPA (CMA), MBA, Rudy Kerklaan MBA, CPA, Bonnie Mah, Amin Sunderji, Lisa Seed

## ARTISTIC

**Resident Designer Emeritus** Ted Roberts  
**Head of New Works & Professional Engagement** Stephen Drover  
**Producer** Jocelyn Tsui  
**Company Manager** Jordan Greene  
**Artistic Coordinator** Sara Ayerman  
**New Works & Professional Engagement Assistant** Evann Hutton  
**Artistic Intern** Karina Escobar

## PRODUCTION

**Director of Production** Ace Martens  
**Stanley Technical Director** TBD  
**Granville Island Technical Director** Kade Larson  
**Pre-Production Technical Director** Jessie Potter  
**Tour Technical Director** Ted Roberts  
**Facility Sales & Rentals Manager** Sean Jones  
**Production Administrator** Dawn Padget  
**Production Assistants** Josh Tompke  
**Stanley Head Electrician** Julie Wiebe  
**Granville Island Head Electrician** Darren Hales  
**Olympic Village Head Stage Technician** Darren Paine  
**Head Tour Technician** Amy Cuthbertson  
**2nd Electrician** Ash Shotton  
**Stanley Head Stage Carpenter** Keegan Plant  
**Granville Island Head Stage Carpenter** Craig Fulker  
**2nd Stage Carpenters** Jillian Papp, Amy Harris (on leave), Jack Mosher  
**2nd Sound Technician** Eric St. Laurent  
**Head Dresser** Sarah McCready  
**2nd Dressers** Alex Campagnaro, Megan Wiebe, Christopher Wu  
**Stagehands** Tyler Bangsund, Daniel Guzman, Finnley O’Brien, Sarah Rosner, Jules Sassi, Siafon

Spencer, Twitch Tobin, Alberto White  
**Head Scenic Carpenter** Joao Carlos d’Almeida  
**2nd Scenic Carpenters** Lorraine West, Chris White  
**Head Scenic Artist** Kristine Kavalec (on leave), Tegan Klancnik  
**Scenic Artist** Emma Dotson  
**Head Properties** Michael Gall  
**2nd Properties** Robyn Volk  
**Props Builder/Buyer** Carol Macdonald  
**Head of Wardrobe** Kirsten McGhie (on leave), Alaia Hamer (interim), Melissa McCowell (interim)  
**Assistant Head of Wardrobe** Olivia Reid-Friesen  
**Stitcher** Anna Potter  
**Head Wigs** Sean Malmas  
**Wardrobe Maintenance** Mary Jane Cox (on leave), Sean Malmas, Eva Janke-Furman

**Stage Managers** Angela Beaulieu, Jessica Bournival, Charlotte Braid, Naomi Esau, Caryn Fehr, Emma Graveson\*, Ronaye Haynes, Pamela Jakobs, Geoff Jones, Peter Jotkus, Sophie Kaplan\*, Jenny Kim, Liz King, Isabelle Martinez\*, Erika Morey, Rebecca Mulvihill, Lyrie Murad\*, Evan Ren, Philomena Sondergaard, Twitch Tobin\*, Luis Zaldivar Gonzalez\*

\*Apprentice Stage Managers

## FACILITIES

**Facilities Manager** Jack Holmes  
**Facilities Coordinator** Lola Claire  
**Building Maintenance** Kris Jankovic

## FINANCE & ADMINISTRATION

**Executive Business Manager** Teddy Forsyth  
**Database Manager** Lou Ann Mendoza  
**Senior Director of Finance** Tracey Loewen  
**Payroll & Benefits Specialist** TBD  
**Controller** Michael Dujardin  
**Accountant** Evgenia Krasnopolsky Sudaka  
**Accounting Assistant** Sunanda Khatib  
**Administrative Coordinator** Evann Hutton  
**People & Culture Specialist** Bruno Urbina Pardo

## EDUCATION

**Director of Education** Kevan Ellis  
**Education & Community Engagement Coordinator** Mikenzie Page  
**Accessibility Coordinator** Amy Amantea  
**LEAP Leaders**, Tetsuro Shigematsu, Veronique West  
**LEAP Assistant** Ashleigh Giffen  
**Musical Theatre Intensive Program Leader** Peter Jorgensen  
**Actor’s Intensive Program Leader** Scott Bellis  
**Creative Teens Program Leader** Jill Goranson  
**Community Creates Program Leader** Jill Goranson  
**Arts Club Showtune Choir Conductor** Libby Donald

## DEVELOPMENT

**Director of Fund Development** Amy Benson Russell  
**Associate Director of Major Gifts** TBD  
**Manager of Sponsorship & Events** Kristina Cressman  
**Manager of Individual Giving** Alicia Szczygielski  
**Individual Giving Coordinator** Sydney Marino  
**Development Coordinator** Charlie Morcombe  
**Stewardship Coordinator** Tess Hayton  
**Planned Giving Officer** Ruby Campbell



**MARKETING & COMMUNICATIONS**

**Director of Marketing & Communications**

Vincent Wong

**Associate Director of Communications** Susan

Cho

**Marketing Manager** April Green

**Graphic Designer** Sean Gordon

**Communications & Content Associate** Christina

Papadatos-Dupont

**Tour & Communications Coordinator** Sophie

McNeilly

**Marketing Associate** Gabrielle Bonifacio

**Specialist, Groups and Partnerships** Danny Mak

**Senior Ticketing Systems Specialist** Mida Maleki

**Publicity & Media Relations** Cynnamon

Schreinert

**Digital Storyteller** Mark Halliday

**Programme Coordinator** Josh Timmermann

**Programme Ad Sales** Jennifer Lee

**GUEST EXPERIENCE**

**Director of Guest Experience** Jay Ono

**Box Office Manager** Arturo Del Rio Bello

**Assistant Box Office Manager** Zander Eke

**Box Office Agents** Emma Abbott, Ria

Antonopoulos, Diego Arciniega, Sam Armstrong,

Jo B., Eric Barnes, Jennie George, Tim Mahoney,

Jessica O’Gorman, Kirk Olson, Nico Pante,

Fiona Pirie, Connor Riopel, Daniel Stover, Adam

Winstanley, Jessica Wong, Luis Zaldivar Gonzalez

**Front of House Manager** Christopher Smith

**House Managers** Emily Dehod, Mary Gomez

Fonseca, Kevin Jesuino, Cat Smith, Maura

Wingle-Land

**Front of House Attendants** Lince Amora, Caitlin

Bellas, Brendan Blanchard, Keila Brock, Luciana

Djanic, Kiara Forgacs, Rose Fulker, Emma

Graveson, Linda Guthrie, Vanessa Ho, Sabrina

Lo, Shirley Lum, Tabitha McIntyre, Sue Pekonen,

Jasmine Provins, Roberta Sciarretta, Deborah

Stalker, Zak Stevens, Michelle Tang

**Bar & Concession Coordinator** Annie Lucas

**Bartenders** Heather Alderdice, Paul Belsito,

Jennifer Beveridge, Elke Dick, Mike Frydenlund,

Lola Funk, Tabitha McIntyre, Ron Mill, Julian

Ono, Shaughnessy Redden, Dallas Richards,

Evan Stover, Victoria Thompson-Fougere,

Matthew Valinho