

ANNUAL  
REPORT

2018/  
2019



**ARTSCLUB**  
ALIVE ON THREE STAGES

## Our Mission

The Arts Club leads in developing and producing live theatre in British Columbia. We inspire and nurture artists and audiences through diverse cultural experiences that are engaging, thought-provoking, and artistically innovative.

## Our Vision

We envision a community that, through storytelling, is inspired to reflect on who we are and who we can be.

### Board of Directors

**Chair** Richard Bell

**Chair Elect** Bryan Mabee

**Immediate Past Chair** Bruce Flexman, FCPA, FCA

**Treasurer** John Dawson, FCPA, FCA

**Secretary** Catherine Aczel Boivie

Mike Black

Teo Dechev

Joan Elangovan

Anna Fung Q.C.

Suzanne James, CPA, CA

James Kitamura

Eugen Klein

Bonnie Mah

Heather McKay

Dave Morton

Ross Paul, CM, PhD

Kerry Suffolk

Erika Tse

Shawn Williamson

Art Vertlieb Q.C.

**Directors in Training** Sean Harris

Oliver, Angie Descalzi

### Council of Governors

Roberta Beiser

Philip Bernard

Donna Celle

Axel Conradi

Jamie Corbett

Bruce Flexman, FCPA, FCA

Chris Gimpel

Stanley Hamilton

Catharine Herb-Kelly, Q.C.

Bruce Milley

Morris Nord

Ross Paul, CM, PhD

Joan Pitman

Janet Rogers

Al C. Schultz

Lisa Seed

Jim Storie

John J. Sutherland

Ian Waddell

### Board of Directors, Arts Club of Vancouver Theatre Foundation

**President** Jamie Corbett

**Treasurer** John J. Sutherland/Jamie Bruce

**Secretary** Lisa Seed

Eugen Klein

Bonnie Mah

Morris Nord



## MESSAGE FROM BOARD CHAIR **RICHARD BELL**



What a privilege it has been to be the Chair of the Arts Club Board as we transitioned to our new Artistic Director, Ashlie Corcoran. Ashlie and Peter Cathie White have established one of the most innovative and professional leadership teams in live theatre in North America. As part of Ashlie's role as Artistic Director, she directed three thrilling shows: *The Curious Incident of the Dog in the Night-Time*, *The Matchmaker* and *Bed & Breakfast*.

During my two-year term, I have witnessed not only the successful transition from the incredible Bill Miller to Ashlie, but also the launch of a new strategic plan which will shape the future of the company, and the rapid expansion of our Legacy Circle, which will strengthen our financial position over time.

Recently, it was my pleasure to participate in the ribbon-cutting ceremony for the unveiling of the renovated Granville Island Stage upper lobby—now rechristened the Robert J. Sharman Waterfront Lounge. Robert provided a significant portion of the funding for the much-needed renovation and I thank him for that on behalf of all at the Arts Club. Also a special thanks to many others, including Stan Hamilton for his tireless work as Project Manager; Sally Mills, a long time subscriber and principal of Kasian Architecture and Design who came on board as the design sponsor for the project; and Shawn Williamson from the Arts Club Board of Directors who established a matching campaign for this project.

Many others contributed, including the Department of Canadian Heritage and the City of Vancouver, and you can see their names on the plaque in the new lounge. If you see them, give them a big thank-you for helping create this beautiful space.

As my term comes to an end, I want to thank our patrons, the three levels of government that support our mission (Canada Council, BC Arts Council, and the City of Vancouver) and numerous corporations and foundations for their ongoing support. Without you, we would not be able to bring great theatre to the stage in Vancouver and into other cities and provinces across the country.

Finally, a special thanks to the executive team of the Arts Club and the Board of Directors. Your insights and support have made my time as Chair a pleasure.

A handwritten signature in black ink, appearing to read 'Richard Bell'.

**Richard Bell**  
Chair

## MESSAGE FROM ARTISTIC DIRECTOR **ASHLIE CORCORAN**



It is hard to believe that my first season at the helm of the Arts Club Theatre Company has already come to a close. I am so grateful for the relationships I have built, the generosity of the community, and the fantastic productions that we have created together.

I would like to personally thank Peter Cathie White for being an incredible collaborator and wonderful co-leader, Richard Bell and the entire board for their support and wisdom, and of course, our dynamic, dedicated and passionate staff at the Arts Club Theatre Company. I am very proud of the shows that have graced our stages this season, from *The Curious Incident of the Dog in the Night-Time* to *Matilda the Musical*, and the other sixteen productions that were cradled in between. Vancouver is full of fantastic directors, designers, stage managers, craftspeople and technicians, and I feel blessed to collaborate with them.

I am also proud of the four productions that we co-produced with companies across Canada. Watching *Mom's the Word 3: Nest ½ Empty* tour to Saskatoon, Winnipeg and Kamloops was also incredibly exciting.

Beyond our productions, I am thrilled with the work we have done to create deeper connections with our local theatre community. We launched four new professional engagement initiatives this season:

- Our Access Grant Program invited Vancouver-based independent theatre companies who were interested

in using the Goldcorp Stage at the BMO Theatre Centre to apply for subsidized space. The recipient of the grant in 2019 was DSR Productions.

- The Emerging Playwrights' Unit supported four playwrights in the early stages of their careers through a yearlong program, receiving dramaturgical input and peer feedback on their writing.
- The Company-in-Residence program offered professional development, encouragement, and resources to a Vancouver-based company in its early years of creating a performance. In 2018/2019, we welcomed our inaugural company, Hardline Productions.
- The Bill Millerd Artist Fund assisted BC theatre artists with professional development opportunities by distributing \$35,000 among 16 deserving recipients.

As you can see, it has been a busy year. We couldn't have done it without all of you. Thank you so much for your support!

Onwards to 2019/2020!

Yours,

A handwritten signature in black ink that reads "Ashlie Corcoran".

**Ashlie Corcoran**  
Artistic Director



## MESSAGE FROM EXECUTIVE DIRECTOR **PETER CATHIE WHITE**



2018/2019 was a season of firsts at the Arts Club. With the advent of a new Artistic Director, Ashlie Corcoran, we embarked on a number of new initiatives:

We introduced Relaxed Performances, which provide an inclusive experience designed to welcome people of all ages and sensitivities to our shows. These performances were held for two of the season's productions: *The Curious Incident of the Dog in the Night-Time* and *Bed & Breakfast*. Both performances were very successful and welcomed over 200 attendees. We are grateful to the Vancouver Foundation, TD Bank, the Longhedge Foundation, and Roberta Beiser for their support of this program.

We extended our New Play Festival into a week of staged readings, which saw impassioned audiences becoming a valued part of the feedback process. With the launch of our Afterschool Drama Club, we also expanded our education reach outside of our own spaces for the first time and provided arts training to youth at Britannia Secondary and the Ray-Cam Community Centre. Through the Grant Burnyeat Student Series, 450 students enjoyed access to an Arts Club production free of cost, and 150 of those students attended pre-and-post show workshops and tours. As part of the program, students were invited to write about the importance of theatre in their lives. Two students from Tupper and Killarney Secondary won an award for their essays through the Grant Burnyeat Writing Competition.

In keeping with this season of firsts, over the past year, members of the Board of Directors, together with the

Senior Leaders at the Arts Club, embarked on a new Strategic Planning process to take the Arts Club through to 2025. This destination plan focuses on where we see the company in five years' time and how we can actively achieve this plan. You can read more about our five-year destination on page 12 of this report.

I would personally like to thank Ashlie Corcoran for her passion and energy. Thank you to our supporters: governments, foundations, corporations, subscribers, ticket buyers, and especially our donors, whose loyalty is vital for this company and this community. Thank you to our Board (and Board Chair Richard Bell whose drive to grow our Legacy Circle has been remarkable), who generously give their time and expertise. And a special thank you to the staff at the Arts Club who work so hard all season long to make this company what it is today.

Bravo to you all.

A handwritten signature in black ink, appearing to read 'Peter Cathie White', with a stylized flourish at the end.

**Peter Cathie White**  
**Executive Director**

# 2018/2019 SEASON

## STANLEY INDUSTRIAL ALLIANCE STAGE



*The Curious Incident of the Dog in the Night-Time*  
Sep 6–Oct 7, 2018



*Sweat*  
Oct 18–Nov 18, 2018



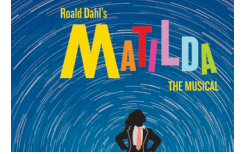
*Disney's Beauty and the Beast*  
Dec 1, 2018–Jan 6, 2019



*The Matchmaker*  
Jan 24–Feb 24, 2019



*The Orchard (After Chekhov)*  
Mar 21–Apr 21, 2019



*Matilda the Musical*  
May 16–Jul 14, 2019

## GRANVILLE ISLAND STAGE



*Mustard*  
Sep 20–Oct 20, 2018



*Miss Bennet: Christmas at Pemberley*  
Nov 15–Dec 30, 2018



*The Shoplifters*  
Feb 7–Mar 9, 2019



*Bed & Breakfast*  
Apr 4–May 4, 2019



*Mom's the Word 3: Nest 1/2 Empty*  
Jun 6–Jul 20, 2019

## GOLDCORP STAGE AT THE BMO THEATRE CENTRE



*Blind Date*  
Nov 22–Dec 30, 2018



*True Crime*  
Jan 31–Feb 24, 2019



*Redpatch*  
Mar 7–31, 2019

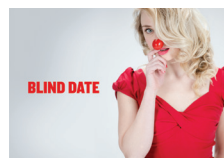


*The Great Leap*  
Apr 25–May 19, 2019

## ON TOUR



*The Piano Teacher*  
Oct 4–Nov 6, 2018



*Blind Date*  
Nov 22–Dec 30, 2018



*Circle Game*  
Feb 14–Mar 26, 2019

As the largest theatre company in Western Canada, the Arts Club requires a tremendous amount of staff, materials, and time to create a full season of shows. In our 2018/2019 season, the Arts Club produced 18 shows, including three touring productions. Here is a quick look at the effort it takes to produce the amazing shows you see on stage each year.



The cast of *Matilda the Musical*: set and costume design by Cory Sincennes; lighting design by Gerald King; photo by David Cooper

612 performances	40 Stage Managers & Assistant Stage Managers
135 Actors	7,137 hours building costumes, with the majority of the work being done by 4 people
30 Directors & Assistant Directors	5 people spent 3,420 hours building sets
82 Designers/Creative Team members	4 people spent 1,320 hours painting sets
12 Musicians	4 people spent 1,931 hours building props

The cost for crew members to install all of the shows into our theatres (including sets, lighting, sound, video & costumes) was \$207,015 with \$43,000 spent on *Matilda* alone.

The crew costs for all shows were \$610,899, around \$300,000 of which was spent on *Beauty and the Beast* and *Matilda*.

In addition to the shows in our season, many more actors, playwrights, directors, designers, and technicians were involved in the development of new work through our programs such as the Silver Commissions Project, the New Play Festival, LEAP and the play readings we stage for our audiences.



**THE ARTS CLUB'S  
SUCCESS IS DUE TO  
OUR COMMUNITY  
OF DEDICATED  
THEATRE-GOERS.  
HERE IS WHAT SOME  
OF OUR PATRONS  
HAD TO SAY ABOUT  
THEIR EXPERIENCE  
AT THE THEATRE  
THIS SEASON:**

**“** We laughed, we cried, we crossed our legs, we shared tears and laughter. We thoroughly enjoyed the performance. Any woman our age will find something of herself in this performance.”  
—Linda, Squamish on *Mom's the Word 3: Nest ½ Empty*

**“** Thank you for making magic happen in front of the eyes of my family. The theatre offers us a space to dream and has created something really special that my wife and I can share with our children.”  
—Mario, North Vancouver on *Matilda the Musical*

**“** Seeing *The Curious Incident of the Dog in the Night-Time* made me very proud to be a part of the Vancouver Theatre Community. I'm so happy to have seen a production of this quality in Vancouver!”  
—Jennifer, Vancouver on *The Curious Incident of the Dog in the Night-Time*

**“** Never have I been as emotionally impacted, enlightened, informed, intellectually stimulated as I was by this breathtakingly beautiful and yet, horrific & gut-wrenching play. Thank you to the First Nations people, to the writers, to the actors, to the crew, to the Arts Club, to all concerned for having the courage, the intelligence, the talent to make this brilliant play a reality.”  
—Maureen, Vancouver on *Redpatch*



Joel D. Montgrand and Raes Calvert in *Redpatch*: set design by Pam Johnson; costume design by Christopher David Gauthier; mask design by Jennifer Stewart; lighting design by Brad Trenaman; photo by Ian Jackson (Epic Photography)

**The Jessie Richardson Theatre Awards**

The annual Jessie Richardson Theatre Awards celebrate and promote the outstanding achievements of the Vancouver professional theatre community. **8** Arts Club productions were nominated for a total of **16** individual nominations in the Large Theatre category.

**2019 Jessie Awards Recipients:**

Outstanding Performance by a Supporting Actress:  
**Nora McLellan,**  
*The Matchmaker*

Outstanding Lighting Design:  
**Itai Erdal,**  
*The Curious Incident of the Dog in the Night-Time*

**Patron of the Arts Award**

**Grant Burnyeat**  
**Justice Grant Burnyeat**, a longtime supporter of the Arts Club (responsible for the Grant Burnyeat Student Series and the Grant Burnyeat Writing Competition) was the recipient of the 2019 Patron of the Arts Award at the Jessie Richardson Theatre Awards. This award is intended to recognize an outstanding contribution that is innovative and/or benefits the community at large. Thank you, Grant, for your continuous support!

The **Bill Millerd Artist Fund** was named for and established by the Arts Club's Artistic Director Emeritus. In the early 1960s, the Koerner Foundation awarded Bill a grant that enabled him to attend the National Theatre School. After 46 years as Artistic Managing Director at the Arts Club, Bill wanted to gift similar life-changing opportunities to other theatre artists.

The purpose of the Bill Millerd Artist Fund is to assist B.C. theatre artists with expenses related to unique training opportunities that will advance their artistic development, such as professional workshops, classes, mentorships, apprenticeships, residencies with a theatre company, or tuition costs.

Applications were reviewed by a committee consisting of **Ashlie Corcoran**, **Kathy Hamilton**, **Bill Millerd**, and **Donna Yamamoto**. 16 recipients received awards during the Fund's inaugural year. The recipients are:

Name	Project
mia susan amir	A year-long, co-mentorship in Mad & Disability theatre
Elaine Avila	Artistic residency at the Aveiro Arts House in Portugal
Mariam Barry	Participating in b current performing arts' Emerging Artist Ensemble
Gavan Cheema	Mentorship with Why Not Theatre and the Shaw Festival's production of <i>The Mahabharata</i>
Dave Deveau and Anton Lipovetsky	Playwrights' residency at Nashville Children's Theatre
Lisa Goebel	Training at the Intimacy Choreographer's Intensive (Toronto)
Tai Grauman	Artistic Direction apprenticeship at Citadel Theatre
Shizuka Kai	Attending the Banff Puppet Theatre Intensive
Angus Kellett	Private jazz keyboard study with Michael Creber
Milton Lim	Media design mentorship with Monty Martin
Jessica Nelson	Assistant Director position on the Arts Club/Vertigo's production of <i>Cipher</i>
Matthew Payne	Supporting a Cultural Perspectives Retreat at the Banff Centre
Jess Amy Shead	Attending the Banff Puppet Theatre Intensive
Agnes Tong	Improvisation training with Blind Tiger Comedy
Astrid Varnes	A directing mentorship with James Fagan Tait at Shuswap Theatre, Salmon Arm
Kaitlin Williams	Attending Directors' Lab North (Toronto)

"I applaud the recipients and thank all who applied for the Fund. I appreciate the incredible work of the committee members as well as the many donors that supported the creation of the Fund to assist theatre artists in their professional development. In particular, I would like to thank the Y.P. Heung Foundation for contributing \$22,000 in this inaugural year." —**Bill Millerd**

Thank you to all of the donors who supported the Bill Millerd Artist Fund, including the Cultural Incentives Endowment Fund and the Y.P. Heung Foundation.

**IN THE 2018/2019 SEASON, THE ARTS CLUB'S EDUCATION DEPARTMENT FOCUSED ON CREATING NEW AND ACCESSIBLE LEARNING OPPORTUNITIES. BELOW ARE FOUR NEW VERY SUCCESSFUL PROGRAMS.**



Photo by Moonrider Productions

## **Technology of Theatre**

We have been bringing high school students to the Arts Club for a long time, but rarely do they see what it takes to make theatre from a technical standpoint. The Technology of Theatre program aims to expose youth to the technical aspects of theatre-making and to potential career opportunities. In this program, 55 students enjoyed lighting and sound design workshops led by Arts Club artists. During these workshops, the students were able to experiment with the Arts Club's equipment, design cues for the Goldcorp Stage, and learn practical tools they can implement in their school productions.

This program was generously funded by the Telus Vancouver Community Board.

## **Afterschool Drama Club**

The Afterschool Drama Club offered two free theatre programs for underserved youth: one at Britannia Secondary and one at Ray-Cam Community Centre. This program allowed 40 young people to experience theatre-making—many for the first time—and allowed them a space for self-expression, empowerment, and community. As part of the program, students attended Arts Club shows and opening nights free of charge, and some continue to work on their own original plays based on their personal stories.

The BC Arts Council, Irma & Marvin Lamoureux, the Diamond Foundation, and the Longhedge Family Foundation generously supported this program.

## **Relaxed Performances**

Relaxed Performances are an inclusive experience designed to welcome patrons of all ages and sensitivities. These performances are modified to maximize the comfort of our attendees. We welcomed over 200 attendees to our Relaxed Performances of *The Curious Incident of the Dog in the Night-Time* and *Bed & Breakfast*.

These performances were generously supported by the Vancouver Foundation, TD Bank, the Longhedge Family Foundation, and Roberta Beiser.

## **Panel Discussions**

This season, we hosted seven panel discussions around the themes expressed in our productions, inviting patrons to explore the wider context of the plays. Some of the events included: "Kaur's in the Arts" (*The Orchard (After Chekhov)*), "The Making of *Redpatch*", "Remembering Tiananmen from Vancouver" (*The Great Leap*), and a "Conversation with Mark Crawford" (playwright for *Bed & Breakfast*). These events provided patrons with a richer experience, enhancing their engagement with the content and form of the play. 153 people attended these seven panels.



**The 2018/2019 season saw the launch of two exciting new artistic programs designed to foster the development of young artists, connect more deeply with our vibrant theatre community, and engage with fresh ideas.**

### Emerging Playwrights' Unit

Generally speaking, the act of play creation starts with the concerted efforts of a single individual: the playwright. This essential person in the theatre is blessed and burdened with a truly creative yet solitary role—all other artists (director, actors, designers) work cooperatively to interpret the playwright's script. The playwright instead works in isolation and collaboration starts only once the script has been printed.

Our Emerging Playwrights' Unit aims to remedy this by recognizing that parallel processes can stimulate creativity. Each year we'll host a cohort of playwrights in the early stages of their careers. We will emphasize the importance of peer support and goal-setting as playwrights develop new scripts. The group will meet once a month to check in on their progress, offer advice to one another, and receive feedback from Ashlie Corcoran and Stephen Drover (Associate Artistic Director).

This year, we welcomed four remarkable young talents as they worked on their exciting new plays: Scott Button (*Night Passing*), Bronwyn Carradine (*Still Life*), Mily Mumford (*Controller*) and Zahida Rahemtulla (*The Frontliners*). In June, we were fortunate to spend a week in residence at the Banff Centre for Arts and Creativity, allowing the playwrights to focus on their writing without the daily concerns of life in the city.

This remarkable initiative would not be possible without the generous support of the Y.P. Heung Foundation, David Fountain, and the Banff Centre for Arts and Creativity. Laying this invaluable groundwork is an investment in the future of Canadian playwrighting and we are grateful for their support.

Zahida Rahemtulla, Bronwyn Carradine, Mily Mumford, and Scott Button of the Emerging Playwrights' Unit, with Artistic Director Ashlie Corcoran and Associate Artistic Director Stephen Drover; photo by Stephen Drover

### Company in Residence

We also welcomed our inaugural Company-in-Residence, Hardline Productions. This program is an opportunity for a young Vancouver-based company to gain insight into the operations of a large not-for-profit organization while creating their work within a supportive environment. The program is designed as a "one-size-fits-one" model and can be tailored to the needs and aspirations of the company-in-residence.

Hardline's residency focused on learning opportunities to develop this exciting artists' collective into a full-fledged professional company. Over the year, we provided ongoing guidance and advice to Hardline, consisting of Sean Harris Oliver (Co-Artistic Director), Raes Calvert (Co-Artistic Director), Genevieve Fleming (Artistic Producer), and Angie Descalzi (Associate Artistic Producer), as they made plans for their future. Additionally, their remarkable production of *Redpatch* was included in our 2018/2019 season on the Goldcorp Stage at the BMO Theatre Centre. We look forward to watching this remarkable young company continue to grow and develop fantastic work.

This program would not be possible without the generous support of longtime donor Jean M. Hurst.



# 20<sup>TH</sup> ANNIVERSARY OF THE STANLEY

**The 2018/2019 season marked the 20<sup>th</sup> anniversary of the historic Stanley Industrial Alliance Stage reopening its doors as the flagship venue for the Arts Club. The Stanley first opened as a movie theatre in December of 1930 and remained a movie theatre for over 60 years until its closure in 1991.**

The Stanley Theatre Society was formed to purchase the historic theatre for the Arts Club, and after a few years of threatened commercial redevelopment, the Stanley was purchased in 1997. The venue's restoration received a 1999 City of Vancouver Heritage Award, solidifying the theatre's status as a cultural landmark in the heart of South Granville.

This historic venue has allowed us to produce inspiring productions with big ideas, yet still maintain the intimacy that we all love about this theatre. As of the end of the 2018/2019 season, we have staged 124 productions at the Stanley, including 10 world premieres, and have sold over 1.5 million tickets. Throughout the past 20 years, many notable artists have graced the stage, including Eric McCormack, Janet Wright, Gabrielle Rose, Morris Panych, Michael Shanks, Brent Carver, Nicola Cavendish and Michael Bublé.

To celebrate this milestone, we staged a series of dinners, sponsored by BFL Canada, honouring the legacy of the Stanley Industrial Alliance Stage. The first dinner was held at West Restaurant in February, 2019, and featured speakers from the Stanley Theatre Society, recounting stories from the early days of the Stanley Theatre and the journey to acquiring the venue. The second celebratory dinner in April, 2019 was held on the Stanley stage itself, amidst the set of *The Orchard (After Chekhov)*.

Thank you to our loyal supporters and patrons who have made these past 20 years at the Stanley Industrial Alliance Stage so rewarding. Onwards to the next 20 years!



Photo by Moonrider Productions



## ARTS CLUB 5-YEAR DESTINATION

## WE ARE LEADERS

**In 2019, the Strategic Planning Committee set out on a new strategic planning process to take the Arts Club through the next five years. Below is our Destination statement of where we plan to be by the end of 2025.**

Facilitated by Jill Robinson from TRG Arts and Nancy Henjum from Henjum Consulting, these meetings developed a new 2025 Destination for the company that focuses on where we see the Arts Club in the next five years.

Thank you to Board members Mike Black (Chair of the Strategic Planning Committee), Richard Bell, Bonnie Mah, and Teo Dechev for their dedication to this planning process.

**BY 2025:** The Arts Club is the artistic beacon for Canadian theatre. There is a clear and impactful shift in attitude—internally and externally—about who we are and what we do. This shift can be defined simply: we are not just large—we are leaders.

The Arts Club is foremost in any national conversation about theatre. There is a buzz across the country about the new plays we pioneer and about our cutting-edge productions that are steeped in beauty. This buzz is not only about what we are creating, but also about how we are innovating sectoral sustainability. We deliver cultural enrichment, organizational innovation, and engagement that inspires our patrons. We are the natural hub for cultural life in our community.

### **We are the most exciting theatre company in Canada through:**

#### **Artistic ambition**

Our investment in artistic practices make us a creative incubator for artists' most exceptional work. We not only meet the benchmark for theatrical excellence in this country, we set it. Our work excites our patrons to return again and again; their experience at our stages is steeped in beauty and has ignited their souls.

#### **Nurturing our patrons**

Our patrons recognize not only who they are in our art, but also build compassion for who they could be. Potential patrons hear about us from their friends who cannot wait to return. Subscribers feel an intrinsic bond with us because of the way we make them feel, and more and more become donors for the simple reason that they cannot imagine this community without us.

#### **Curiosity to innovate**

We innovate and lead in new business models; building diverse audiences, expanding our artistic practice, encouraging environmental sustainability, and growing equity, diversity, and inclusion on our stages and in our teams.

#### **A Culture of Belonging/A Culture of Yes!**

We are the best employer, home to the most talented staff, who we develop and retain. The Arts Club crackles with positivity and generosity of spirit about ourselves and our community and we burst with pride for all our productions and the work we do around them.

The shift has happened. Our artistic ambition is realized, our patrons are inspired, our community is engaged in what we do, and we allow ourselves the joy and freedom to innovate and explore with teams that are emboldened and empowered to be part of the most exciting theatre company in Canada.



## THE ARTS CLUB THEATRE COMPANY IS GRATEFUL FOR THE ONGOING SUPPORT FROM GOVERNMENT FUNDERS, FOUNDATIONS, CORPORATE PARTNERS, AND OUR INDIVIDUAL DONORS.

### Season Sponsors



### Presenting Sponsors



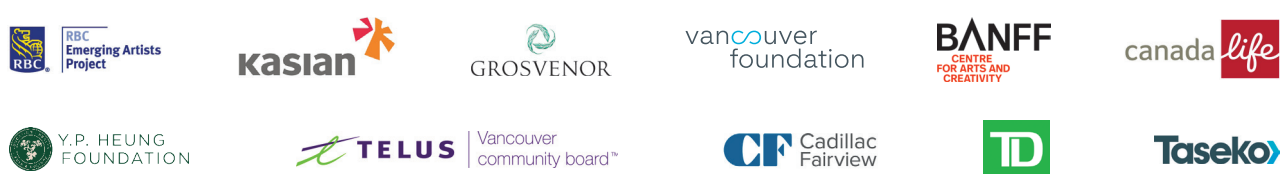
### Production Sponsors



### Technology Sponsors



### Community Outreach Sponsors



### Event Sponsors



### Government Sponsors



### Additional Partners

#### \$10,000+

Anna's Cake House  
Business in Vancouver  
CKGSB Alumni Association  
KPMG  
Leith Wheeler Investment Counsel  
National Bank Financial  
Singleton Urquhart Reynolds  
Vogel LLP  
WIIIFM Management Ltd.

#### \$5,000-\$9,999

Capital Concepts Group  
DCM Wealth Management  
Empire Life  
Mercury Launch & Tug Ltd.  
Matra Construction  
TD Bank Group

#### Up to \$4,999

Bijan Law  
BMO Nesbitt Burns  
Eldorado Gold  
Genus Capital Management Inc.  
Marin Investments Limited  
Maxwell Floors Ltd.  
Rayacom Print + Design  
Richards Buell Sutton LLP  
Save-On-Foods  
The Sherwin-Williams Company  
TR Trades Reproduction  
WA Architects Ltd.

### Foundations

Christopher Foundation  
Connor, Clark & Lunn Foundation  
Diamond Foundation  
Hamber Foundation  
Kaatz Foundation  
Lohn Foundation  
The McLean Foundation  
Alan & Gwendoline Pyatt Foundation  
McCarthy Tétrault Foundation  
The River Foundation  
The Simons Foundation  
The Somerset Foundation

## Our Donors

\* INDICATES 5+ YEARS OF GIVING

### Legacy Gifts

Estate of Doris Chillcott and  
Bruce Granville Peyman  
Estate of Muriel Kathleen Don  
Estate of Timmie Marr  
Estate of Mary Sharon McLean  
Estate of Myfanwy Lyn Roddis  
Estate of Louise Chen Utengsu  
Estate of Barrie Wharton  
Estate of Arlene Vivian

### Legacy Circle

Byron Aceman  
Robert & Enneke Allan  
Corinne Assayag  
Richard Bell  
Philip & Donna Bernard  
Jack & Lyrica Bradshaw  
Boivie Family Fund  
Grant Burnyeat  
Judith Coffin  
Judi L. Curtiss  
Dr. Kathleen Dahlstrom  
Sam & Elizabeth Dunbar  
Wilson Durward  
Bill & Sandra Epplert  
Bruce & Dale Flexman  
Lee Grills  
Stephanie Hargreaves  
Jack Holmes  
J.M. Hurst  
Dr. Ronald Jobe  
Linda M. Johnston  
Bruce Kellett  
Marvin & Irma Lamoureux  
Bonnie Mah  
Bryan Mabee & TerriLynn Ray  
Betty McGowan  
Bill Millerd  
Susan Mueller  
Todd & Valerie Prodanuk  
Joanne Pugh  
Alfred Schultz & Leona Kolla  
Robert Sharman  
Jo-Ann Ternier  
D. Marion Thomas  
Anthony & Noreen Willingdon  
Terry Whitehead  
Anonymous x15

### Visionaries (\$10,000+)

Richard Bell\*  
Robert Bennett, in memory  
of Miriam\*  
Philip & Donna Bernard\*  
Grant D. Burnyeat\*  
Geoff Clydesdale\*  
Jamie & Margaret Corbett\*  
Ian & Frances Dowdeswell\*  
Dale & Bruce Flexman\*  
David Glenn Fountain C.M.  
Christopher & Anya Gimpel\*  
Lee Grills\*

Stan & Kathy Hamilton\*  
Irma & Marvin Lamoureux\*  
Longhedge\*  
Bonnie Mah\*  
Bill Millerd & Marsha Sibthorpe\*  
Karen Nordlinger  
Glenn Powers & Melanie Wong  
Foundation Fund\*  
Robert Sharman\*  
Art Vertlieb & Bev Briscoe\*  
Mr. Shawn Williamson  
John & Cathy Windsor\*  
Charles & Dale Young\*

### Transformational (\$6,000–9,999)

Roberta Lando Beiser\*  
Lyrica Bradshaw\*  
Val & Dick Bradshaw\*  
Dr. Kate Dahlstrom\*  
J. M. Hurst\*  
Marilyn & Murray MacKenzie\*  
Pam & Jim McAdie\*  
John & Judy Taylor\*  
Adam Whitcombe &  
Susan Forbes\*  
Terry Whitehead\*

### Innovation (\$3,000–5,999)

Brian Angus & Dorothy Stauffer\*  
D. Bell & M. Sim\*  
Julia Blockberger\*  
The Boivie Family Fund\*  
C. J. Brooks\*  
David & Edith Camm\*  
Drs. Doug & Kerstin Conn\*  
Sherry Copeland\*  
John & Carol Dawson\*  
Neil Duke & Candace Yip\*  
Bonnie & Terence Gordon\*  
June Harrison & Luc Bergeron\*  
Catharine G. Herb-Kelly\*  
Elaine Hunter & Bruce Watt\*  
James & Maureen Kitamura  
Bill Koch & Margaret Kendrick\*  
Stephen Richards & Linda Loo\*  
Alfred C. Schultz and Leona Kolla\*  
Curt Smecher\*  
Andrea Stolte\*  
Christopher Stott  
Dr Tim & Hilary Temple\*  
Paddy Young\*  
Howard Young\*  
Anonymous x3

### Community Impact (\$1,500–2,999)

Byron Aceman\*  
The Amell Family  
Corinne Assayag,  
WorldExposure.com\*  
Kurt Aydin

In memory of Jim Babcock\*  
Scott & Dorothy Bell\*  
Gordon & Cheri Bird\*  
Mike and Maureen Black\*  
Marc & Kelly Bourne\*  
Ruth Brodie\*  
Jamie & Cindy Bruce  
M. & F. Bylsma\*  
Fred & Dawn Cadham\*  
Marnie Carter\*  
Elaine & Ken Carty\*  
Peter Cathie White &  
Douglas Seifert\*  
Dr. Jason & Aria Conn\*  
Axel & Millie Conradi\*  
Teo Dechev  
Wilson Durward\*  
Joan Elangovan  
Sandra & Bill Epplert\*  
Miss Heather Farrar\*  
Sarah Tutton Frost\*  
Patricia Mae Fulton\*  
Anna K. Fung\*  
Judy Garner\*  
Victoria I. Graham\*  
Clarissa P. Green  
David & Fay Harris\*  
Lili Hao  
John & Jo Lynne Hoegg\*  
Norm Hotson & Barbara Lindsay\*  
B & I Housego\*  
Lisa & Mike Hudson  
Suzanne James  
Wayne Keiser  
Rudy & Elizabeth Kerklaan\*  
Eugen Klein\*  
Lorna Jean Klohn\*  
D. Wendy Lee\*  
Frank and Joan Lew  
Charitable Trust  
Cris Leonard & Katherine Locke\*  
Bill & Risa Levine  
Bryan Mabee & TerriLynn Ray\*  
Kathy & John MacKenzie\*  
Manthorpe Law Offices\*  
Ben Matthews  
Janet & Scott McCloy  
Heather McKay  
Rob & Sarah McLeod\*  
Allan McMordie  
David Morton\*  
Ian & Louise Mummary\*  
G. Murphy\*  
Barbara & Terry Myers\*  
Lou Natale  
Lisa & Brad Newby\*  
Donna & Chris Nicolls\*  
Morris Nord & Fiona Macdonald\*  
Wendy & Chris Orvig\*  
Ross Paul & Jane Brindley\*  
Kirsten & Ali Pejman  
Todd & Valerie Prodanuk\*  
Joanne Pugh\*

Janet Rogers\*  
Andre & Brock Rowland\*  
D. Scott & K. Tieman\*  
Lisa Seed\*  
Ken Spencer & Judy Gale\*  
John & Mary Street\*  
Kerry & Scott Suffolk\*  
Vincent & Marie Zelig Tan  
D. Marion Thomas\*  
Ellis Ripley Trafford &  
Michael Walker\*  
Cindy & Bruce Verchere\*  
Ian G. Waddell, Q.C.\*  
Mrs. Terry Wilkinson\*  
Terry Wolfe & Marlene Dixon\*  
Jane & Maurice Wong\*  
Deb & Jim Yeates  
Anonymous x4

### Associate Director (\$1,000–1,499)

Dr. Joy E. Alexander\*  
Mary Basas  
Paul & Elizabeth Beckmann  
Marilyn Books &  
Terry Prendergast\*  
In honour of Art Vertlieb &  
Bev Briscoe  
Don & Brenda Chapman\*  
Ashlie Corcoran  
Greg Deans and Jim Beaudreau  
J & J Gray  
Mitchell & Lynne Gropper\*  
Helen Hansen  
Joan & Trevor Heaver\*  
Signe Jurcic\*  
Don Lindsay  
Ms. Marti Morfitt  
Jane Mortifee\*  
Susan Mueller\*  
Louise C. Peters\*  
Dietmar Raudzus\*  
Mrs. Wendy Robinson &  
Mr. Jeff Robinson\*  
Donia Sims\*  
Joanne Smart  
Dr. Larry Stonesifer &  
Mr. Ronald Angress\*  
Dr. Ian & Jane Strang\*  
Maureen Taylor  
Art Toft\*  
Erika Tse\*  
Edward L. Wilson\*  
Eric Wilson\*  
Anonymous x1

### Advocate (\$750–999)

Heinz Bohnet\*  
Jack Holmes\*  
Lois Horan  
Doug and Vicki Horswill  
Ken Lee & Jim McLean  
Ron Ogilvy\*

Carl Presland & Lei Li\*  
John & Bonnie Schmelke\*  
Laurie Stovel\*  
Daniel Worsley\*

### **Patron (\$500-749)**

Thomas & Catherine Adair\*  
Sherri-Lynne Adams  
Robert & Enneke Allan\*  
Rojeanne Allworth  
David & Heather Ashley\*  
In memory of Adele Baeuml\*  
Dr. Philip & Lori Barer\*  
Richard Benmore\*  
Carolyn Bird\*  
Sharon & John Bishop\*  
Jim & Nancy Boyle\*  
Sheila Brew\*  
Deborah Brown & Arthur Harpur\*  
Elizabeth J. Burrell\*  
Chuck & Diane Campbell\*  
Doug & Lynn Campbell\*  
H. Campbell & K. Zaine\*  
Vince Chura\*  
Clear HR Consulting  
Dorothy M. Copp\*  
Chris & Lisa Dabrowski\*  
Cindy David  
Kara Davies  
Connie Dolphin\*  
Jane Durant\*  
In memory of Howard Eckman\*  
Earl Ellett  
Marlene Enns  
evolve Nurturing Vitality  
(Dr. Shamira Rahim)\*  
Mike & Lynda Fahrman\*  
Charles & Donna Gauthier\*  
Marianne & Verne Glover\*  
Dennis Goodman\*  
Stephanie Han  
Nelli Hanbury  
Marilyn Harris  
Gerald & Patricia Haslam\*  
Brenda Heartwell\*  
Brenda & Phil Hooper  
Ann Howe\*  
Donald & Patricia Hudson\*  
Bill & Barb Humen\*  
Sharon Jeroski\*  
Gloria Joller\*  
Stephen & Mary Ann Juras\*  
Douglas Justice  
Suzan M Lagrove\*  
Jacqueline Kelly &

Rowland McLeod\*  
Murray Leith  
Erica Levy & Alan Kingstone\*  
Mary MacDonald &  
Blaine St. Arnault\*  
Maureen L. MacDonald\*  
Kenneth MacLeod &  
Elizabeth Black\*  
John Martin  
Jane & Ian Mavety\*  
Martin & Mrs. Patricia Milewski\*  
John Miller  
Mary Millerd\*  
Tracy & Sandra Moore\*  
Mike Moretto\*  
Catherine Morgan &  
Michael Jonker\*  
Lynne and Erik Ostensoe  
Patricia Patton  
Margaret & Paul Phang\*  
F. Regan-Pollock\*  
John Richardson  
William D. Robertson\*  
Elfriede & Peter Rohloff\*  
Deborah Rollins\*  
Harley Rothstein & Eleanor Boyle\*  
Michelle Rupp  
P.D. Ryan\*  
Sonja Sanguinetti\*  
Peter & Ravi Saulnier  
Kathie Schwaia\*  
Erika & Andrew Scott\*  
Bob Shorthouse\*  
Eileen B. Stewart\*  
Kay and Norm Stolberg\*  
Richard Swann & Della Fuller  
Christopher Tait & Suzanne Fox  
Beverley Tamboline\*  
Juliette Thomas  
In honour of Kaja Ryzner\*  
Helen & Barry Thorson\*  
Tom Wallis\*  
Allan Webber, in memory of  
father Gordon\*  
Christina & Bruce Wendel\*  
Susan Williamson  
James Wyse, in memory of  
Jim Babcock\*  
Janet York\*  
Anonymous\* x3  
Anonymous x2

### **Enthusiast (\$300-499)**

Mark Atunes & David Gabel\*  
Sarah Ball

Bartholomew & Thorstenson\*  
In memory of Carol  
Gillian Beattie\*  
Larry & Nancy Behnsen\*  
Dr. Vicki Bernstein\*  
Debbie Berto & Dan Sanderson\*  
Brendan & Karly Black\*  
M. A. Boltezar\*  
Kenneth Broadway\*  
Joan Campbell\*  
Ellen & Paul Challinor\*  
Chin's #boysclubbyr\*  
M. Clyne\*  
P. J. Curtis\*  
Shaun Dacey  
Valerie Dahl & Tony Traboulsee\*  
Rochelle Dubetz  
Shirin Escarcha  
Carol Anne &  
Grenville Finch-Noyes  
Jane Flick & Robert Heidbreder\*  
Allen M. Fowlis\*  
In memory of Tom Fraser\*  
G. & M. Geib\*  
Karen Gilmore & Rob Van Nus\*  
David Gowe\*  
Tyson Gratton  
Pam Grover\*  
Yuan Yuan Gu  
Linda & Lawrence Haley\*  
Stephanie & John Halse\*  
Dr. Evelyn J. Harden, in memory  
of John Wood\*  
Brooke & Brandon Hart  
Doug & Margaret Hatlelid\*  
Ann Heald\*  
Peter & Iris Hill\*  
Kaitlin Houle  
Alex Jackson  
Carolyn Jay\*  
Ron Jobe\*  
Betty Jung & David Chan\*  
Mark Kahn\*  
Peter Kappel\*  
Sabine & Glen Keil  
Marylou & Tom Kirstein\*  
Carol & Terry Kline\*  
Emilie Lahaie  
Florence Laniuk\*  
Susan Lankau  
Ryan Lee  
Deborah Lendon\*  
Esther Leung\*  
Lorne & Audrey Lindsay\*  
Dr. Edward & Sharon Lowe\*

Linda Lowry\*  
Marian E. MacFarlane\*  
Lucile & Peter MacKay  
Jeff & Valerie Marus\*  
Anne Mathisen\*  
Jelena Matic  
Sarah McAlpine\*  
Terry & Sandy McBride\*  
Bill & Beth McCracken\*  
Bill McNaughton  
Mrs. Verna McNichol\*  
Ken & Irene Merrells\*  
Glen & Christine Mitchell\*  
C.J. Newson\*  
Faye Nowak  
Stephen & Pamela Ottridge\*  
Nick & Hazel Parker-Jervis\*  
Marion Pearson and Jim Orr Fund,  
held at Vancouver Foundation\*  
David Penner  
Sherri Pierce  
Joan & George Pitman\*  
Brian Pomfret  
Deborah Pound\*  
Allan & Blaize Reich\*  
Keith & Maureen Reid\*  
Heather Risk\*  
Lance & Sandra Rossington\*  
Anne Rowles & Afton Cayford\*  
Gail Ruginis  
Gail Screaton & John MacLachlan\*  
Rosamund Simpson  
Tricia Sirrs\*  
Alison P Stockbrocks  
Sandi Strate\*  
Chris & Pat Tipple  
Jacqui Tyler\*  
Tino Varelas\*  
Nancy Vered  
Jeddy Walsh\*  
J. Walsh\*  
Michael & Judith Watson\*  
Ellen Wattam\*  
Lyn & John Webster\*  
Ralph & Valerie Wettstein  
Blair Whelan & Rochelle Dubetz  
Helen Wong  
Anonymous\* x4  
Anonymous x4

### **Associate (\$200-299)**

Karen Adlington & Alan Turner\*  
Janet Allwork\*  
Dave and Christine  
Tracee & Roger Andrews

“ Having been season ticket holders for the past 47 years, we have become passionate about making an annual donation towards this brilliant team of actors, directors, technicians, and managerial talent. As a result, we are gratefully rewarded with 12 months of thought-provoking entertainment, with seasonal offerings that reach across cultural, social, and gender barriers, including unparalleled community contributions for all aspects of cultural theatre life. The Arts Club is a true ‘class act’ organization from top to bottom and we couldn't be more pleased to be a part of it, forever.”

—Bonnie & Terry Gordon



Robert & Cora Ashburner  
 Dr. Jennifer Baird  
 Bill & Gladys Baxter\*  
 Ilene-Jo Bellas\*  
 In memory of Brian Bentz  
 Pauline Bingham  
 Ken Blocka & Monica Hrynchak\*  
 Mr. William D. L. Bowen\*  
 Carolyn & Steve Broady  
 Janice Brooke\*  
 Marlene & Kenneth Brown\*  
 Barbara E. Buchanan  
 Sherry & Allan Buium\*  
 Robert Cantwell  
 Adrienne Chan\*  
 Lorna Chan-Yan\*  
 Marina Chang  
 In memory of Cynthia Church  
 E.A. Clutchey\*  
 David & Marilyn Coburn  
 Karen & Don Cormack\*  
 Kenneth Ian Cron\*  
 Fred & Diane Dallyn\*  
 Audrey Davis  
 Diane & Renzo Del Negro\*  
 Ross Demello  
 Jim & Muriel Don\*  
 L. Eldridge\*  
 Anne Elliott\*  
 Beverly Epp\*  
 Nina Ferentinos\*  
 Judith Forsberg\*  
 Mr. Tim Fort  
 Ethel & David Frankel\*  
 Ruby Fraser  
 Shirley and Don Fraser\*  
 Lori Fretwell  
 Deirdre Gernsbeck\*  
 Maryke Gilmore  
 Allan & Sharon Gjernes  
 Daryl Gouthro\*  
 Brian Greenside  
 Loree Gregg\*  
 Dianne Haag/Accommodations  
 by Pillow Suites\*  
 Megan Halprin\*  
 Vincent Hanemayer &  
 Margaret Shaw\*  
 Marilyn Harrison\*  
 Gail Helmcken\*  
 Victoria Henderson &  
 John Radosevic\*  
 Carol Herbert & Fred Swartz  
 Maureen Hill  
 Aileen Hollifield\*  
 Brenda Hudson\*  
 Larry Hughes  
 Lee Hughs & Teresa Black Hughes\*  
 On behalf of Morgan C.C. Hutchison  
 Susan E & Stephen Jackson\*  
 Kathleen Jagger  
 Michael Janusz & Christine Eckel  
 Marni Johnson\*  
 Bonnie Johnston  
 Linda Johnston\*  
 Linda & Greg Jones\*  
 Mavis & Carl Jonsson\*  
 Mary Jordan

Grandma Rose  
 In memory of Mélanie Clare  
 Anne Kober\*  
 Michael Kobor & Janina Kon\*  
 Marie & Robert Kuhn\*  
 J. Lee\*  
 Sharon Lee\*  
 Jane Leroux  
 Ken & Leah Levitt  
 Anna & Martin Linsley\*  
 Kevin & Karin Lutz\*  
 Arlene MacPhail\*  
 In Memory of Dan Maas  
 Bruce & Marla MacDonald  
 Alexander & Ketty Magil  
 Erica Mahon & Peter Lewis  
 Debra Von Mandl  
 Sharon Marshall  
 Marlene McDonald\*  
 Sheila McGivern\*  
 Geoff & Colleen Dean\*  
 Betty McGowan  
 Tricia McLean\*  
 Deborah & Stephen Meehan\*  
 Carlos Mejia & Marta Levi  
 Mary Lou Miles  
 Marilynne Mitchison  
 Robert More\*  
 Sandy More  
 Patricia Muldowney  
 Ellen & Rodney Murrell  
 Gaylene Newman\*  
 Barbara Norman\*  
 Jim O'Grady  
 Valerie O'Shea\*  
 June Ogden  
 Heather McDonald and Jack Olsen  
 Jean Orr\*  
 Laurie & Ron Osborne\*  
 Barb & Karl Pearson\*  
 Neil Pinheiro\*  
 Jean Pirie\*  
 Art & Myrna Poisson\*  
 Lyle Pullan\*  
 Nels Ng and Jess Quan  
 Judy Reykdal  
 Sarah Richman  
 Linda Robbins  
 Elizabeth Roger  
 Lynne & Don Rose  
 Mr. & Mrs. Real Rousseau\*  
 Johanna & Derek Rundell\*  
 Eleanor Ryrrie  
 Charles Sale & Margaret Charlton\*  
 Beverley Scott\*  
 Mr. Bill Sexsmith  
 Ian Smith & Radana Vaughan  
 Robert & Sally Smith\*  
 Michele Soregaroli  
 Rosalie Soregaroli  
 LaVonnie Steger\*  
 Kumi & Gary Sutcliffe\*  
 Mr. & Mrs. Sutton  
 Greg Tamkin  
 Anne & Mitch Taylor  
 Peter Thaler\*  
 Deborah Thorvaldson  
 Kon & Elizabeth Tsang

Vivian & Barrie Urquhart\*  
 Mary Vecchio  
 Susan Viccars  
 Dr. & Mrs. Wadge\*  
 Christine Walsh  
 Janice Walsh  
 Mary Westrom  
 Dr. Jamison & Ms. Ellen Wilcox  
 Doug Wootton  
 Marg Worthy\*  
 Peter & June Young Legacy  
 Fund, held at the Vancouver  
 Foundation\*  
 Anonymous\* x2  
 Anonymous x10

### Supporter (\$100-199)

Amanda Abel  
 Carol Acton\*  
 Louise Adams\*  
 Martin Adams  
 Maureen Adams\*  
 Dale Adamson & Bruce Sharpe\*  
 Parm Ahuja-Robertson  
 Helen Alko\*  
 Jocelyn Allcock  
 Chris Allen  
 D. Allen & B. Judge\*  
 Gloria Altman  
 Debbie Amaral  
 Amney Amery  
 Ren & Bonny Amor  
 Sue Anderlini\*  
 Clark Anderson & Robin Fowler  
 Elvie Anderson  
 Lynne Anderson\*  
 George & Lise Andres\*  
 Rio Anuales\*  
 Sabine Arbuckle  
 Rae Archer\*  
 Bryn Archibald  
 E. A. Armstrong\*  
 Trevor Armstrong &  
 Catherine Kinahan  
 Neil & Diane Arnett\*  
 Rati Arora & Richard Shypitka  
 Liz Atchley\*  
 Mark Attisha  
 Norman Au-Yeung\*  
 Wayne Audette  
 Daniel & Sandy Austin  
 Ernest J Baatz  
 Marguerite Bachmann\*  
 D'Arcy Bader\*  
 Jill Bain & Bill Napier-Hemy  
 James Baird\*  
 Wendy Baker  
 Mary & Sam Balden\*  
 Martha Baldwin  
 Sally & Kenneth Ball\*  
 Jennifer Ballantyne  
 Elizabeth & Curtis Ballard  
 Megan Balmer  
 Stephanie Baresh  
 Janet & Charles Barstow  
 Michael Batten & Erica Roberts  
 Anne Bauer  
 Allen & Noelle Baxter\*

James Bayles  
 Margaret Bayliss  
 Ian Beardmore  
 Kathleen Beaton  
 Pat Beaucamp  
 Anne Beaulieu\*  
 Espie Belen Polkinghorne  
 Barbara Bell  
 Heather Benna  
 John Bennett  
 Mary Bennett  
 Allan Benson  
 In memory of June and my many  
 theatre going friends!  
 Jonathan & Heather Berkowitz  
 Bob & Kay Bernard  
 Peter & Susan Bernard  
 Michael & Margaret Berthelsen\*  
 Nancy & Keith Bespflug\*  
 William Bilecki & Joan Kowalewich\*  
 Maria M Billesberger  
 Doug Bing  
 Dan & Arlene Birch  
 Ingrid Bjerkelund\*  
 Sandra Blackmore  
 Mairi Blair\*  
 Patricia J. Blair  
 Jean Blake  
 In memory of Elvira Quarin  
 Maya Bleiler  
 Deena Boeck  
 Janet Boeur\*  
 Jean Bodlak\*  
 Alain & Annick Boisset  
 Patricia Bond\*  
 Hubert Bonin  
 Shannon Bosa  
 Helen Boultsbee  
 Sheila & David Boulton  
 Lisa Bower  
 Michael & Polly Bowie  
 Barbara Boyd  
 David Boyd  
 Dr. Chris Bozek & Dr. Donna Sue  
 Angela Bradbury  
 Robert & Sue Bradley  
 Barbara & Carl Brandes\*  
 Bill and Jas Brar  
 Robert Brebner  
 Weldon Brittain  
 Cathy Brookes  
 Jacqueline Brown  
 Janice Brown  
 Libby Brown  
 Cicely Bryce  
 Brenda Buchanan\*  
 Aralee Buckland\*  
 Lucy Budhoo  
 Cathy and Don Buffham  
 Maureen Bulger  
 Marilyn Bullock\*  
 Susan Burdak  
 Douglas and Janice Burke  
 Kate Burnard  
 Pamela Burns & Dale Boniface  
 Joan & Robert Burrows\*  
 David Bursey  
 Karin Bury

Lorelle & David Butler\*  
 Marilyn Buttle\*  
 Robert Capar  
 Shaun Carroll  
 Suzanne & Jim Carter-Huffman  
 Kathleen Cassidy  
 John Cassini  
 Jeff & Brenda Caughlin\*  
 Julie Cayer  
 Della Cecil  
 Valentina Cesaratto\*  
 Linda Chamut & Terry Lindall\*  
 Mrs. Donna Chan\*  
 Michael Chan  
 Patricia Chan  
 Sheldon & Marilyn Chandler\*  
 Cissy Cheng  
 Sheldon & Jane Cherry\*  
 Ross & Carol Jean Chevalier\*  
 Alison Chilton  
 Vena Chopra  
 Nancy Chouinard & Lew Potts\*  
 Mr. Jack Chow &  
   Mrs. Pamela Chow\*  
 Jack Christiansen & Sherry Walton  
 Susan Christie  
 Rhona & Valdy Chrobok\*  
 Clement Chung  
 Luca Citton  
 Hugh Claxton  
 Jennifer Cloutier, in memory of  
   Kenneth E. Mathews\*  
 Robert & Elizabeth Coan  
 Judith Coffin\*  
 Isobel Cole\*  
 Michael & Ruth Coles\*  
 Carell & William Colvin\*  
 Robert Conconi\*  
 Mrs. Sheri Conner\*  
 Diana Zoe Coop  
 Susan Corcoran  
 Chris Cornish  
 Lynn Corrigan  
 Judith Corrins  
 Lorena Coslovich\*  
 Wanda Costuros &  
   Doug Whitehead  
 Patricia Cottingham\*  
 Howard & Beth Coulter  
 S. Courtemanche\*  
 Eilis Courtney\*  
 Bruce Cowie  
 Barbara Cox  
 Claudia Craig  
 Sharon & Lorne Craig  
 Barbara Crawford and Michael Ritts  
 John and Barbara Creighton  
 Barbara Crichton  
 Bob & Cathy Crockett\*  
 Lee Cross\*

Audrey and Brian Crow\*  
 George & Mary Cunningham  
 Kathleen Cunningham\*  
 Naomi Currie\*  
 Judi & Don Curtiss\*  
 Wendy & Paul DaDalt  
 Bob Dagg  
 In memory of Dan, Tim & Bill\*  
 Michele Danelice  
 Christian Daudt  
 Joan Davidson\*  
 Cherie Davis  
 Andrew Pearson and  
   Lela Dawson  
 Kathryn Day  
 Harriet Dean\*  
 Michael Dejak & Heidi Redon  
 Lydia deSousa  
 Erin & Giorgio D'Este\*  
 Curtis Deugau\*  
 Mr. & Mrs. Devlin\*  
 Allan Diamond\*  
 Nedra Dickinson  
 Carol & Sean Dingley\*  
 Sharon Dixon  
 Sylvia Dixon\*  
 Sharon & Allen Domaas  
 Fran Donis  
 Susan Donn  
 Pattie Donnelly\*  
 Del Dorscheid &  
   Maureen Evashkevich  
 Lauren Dowad\*  
 Patricia Dowad  
 Diane & Neil Dronsfield\*  
 Brian Drummond\*  
 Wendy Dry  
 Phil Dubois & Maureen Carse\*  
 Mark Duncan  
 Sharon Dunlop  
 Lisa Edgett  
 Mark and Anne Ellenberger  
 Joan & Bob Elliott  
 Sue Elliott\*  
 Irma Epp\*  
 Dana Fabbro\*  
 Darleen & Bob Fairley\*  
 Dala Falkenberg  
 Donald & Rochelle Farquhar\*  
 Robert and Tina Fawcett  
 Keltie & Dave Faynor\*  
 Peter & Eva Ferguson\*  
 Georgina Ferguson  
 Sharel Ferguson  
 Sandra Fergusson\*  
 Chris & Suzanne Finch  
 Lance & Judy Finch\*  
 Larry and Anne Fisher\*  
 Sylvia Fitzgerald  
 Nancy Flexman\*

Mary Fontaine  
 Craig & Lisa Forrest  
 Gavin & Sara Forsyth\*  
 Sheila Francis & Terry Willies  
 Marlene Franks\*  
 Bill B Fraser\*  
 Janet Fraser\*  
 Richard and Catherine Freeman  
 Ruth Freeman  
 Robert & Sally Gallacher\*  
 Anne and Daniel Gardiner  
 Maureen Geldart  
 John & Pat Gemmill  
 Sharon Gerbasi\*  
 Martin Gerber  
 Shannon & Grant Gillin\*  
 Sylva Giroux  
 Roslyn Goldner  
 Judith & Barry Gosney  
 John Goundrey  
 Ingrid & Colin Gour\*  
 George & Rita Gouraud\*  
 Mary Ellen Graham, in memory of  
   David Graham\*  
 Jill Grant\*  
 Louise Grant  
 Colin Gray & Liza Hutchison  
 Diana & Douglas Gray\*  
 Lorraine Green\*  
 David & Karalee Greer  
 Laura Groos & Gerry Prins\*  
 D. Grossman & Assoc., CGA  
 Cindy & Phil Gustin  
 Muff and Douglas Hackett  
 Hackwood  
 Janette Hadden  
 Aaron and Madeline Hait  
 Carmen Haller  
 Sharon Hamer  
 Karen & Bruce Hamersley  
 Bruce Hamilton  
 Kara & Scott Hammond  
 Daphne Hampson  
 Richard Hankin &  
   Heather Jones Hankin\*  
 In Memory of Olive Lane\*  
 James Harcott  
 Karen Hardie  
 Selma Hardin\*  
 David F. Hardwick &  
   Virginia J. Baldwin\*  
 Deane & Gail Harold  
 Joyce Harpell and Judith Miller  
 Maria Harris\*  
 Linda Harrison  
 Marcia Harrison  
 Paul Hart & Pat Harrold\*  
 Leo Hathaway & J. Kiley Hamlin  
 Joanne and Les Hausch  
 Judy Hawkins

Andrea Heald  
 Stephen Heatley\*  
 Stan & Corky Hecker\*  
 Emma Hedley  
 Lynell and Robert Heikkila  
 Margaret Heldman &  
   Richard Lockhart\*  
 Carolyn Heller & Alan Albert  
 Wilhelmina Helps\*  
 Karen Henderson  
 Linda Lee Henriksen  
 Sybil Henteleff  
 Rosemary Heppner  
 Edith & Bob Hewitt\*  
 Rick and Kim Hill  
 Lewis Hiltz & Patricia Hunter\*  
 Robert G. & Jean F. Hindmarch  
 Nancy Hinds  
 Ruth Hodgins  
 Marsha Hoggan & Jack Scoular  
 Alex & Mavis Holm\*  
 Ms. Anne Holtzman  
 Anne Hope\*  
 Trish Hopkins\*  
 Denis Horgan\*  
 Elaine Hornell  
 Arlene Howard\*  
 Linlin Hsia\*  
 Louise & Don Hutchinson\*  
 Susan Hyam, in memory of  
   Ann & Gerry  
 Susanne Indridson\*  
 Barbara and David Inglis  
 Merion Innes\*  
 Maria Irvine  
 Jennifer Irvine  
 Lorraine Irvine  
 Maureen Jack-Lacroix &  
   Derek Lacroix  
 Patrick Jackson\*  
 Robin Jackson\*  
 Tania Jackson  
 Darlene James  
 Joanna & Richard James\*  
 Teresa & Lewis James\*  
 Kara Jansen & Chris Hoag  
 Ardis Janzen\*  
 Edwina & Rick Jeffrey  
 Kris Jensens  
 Marjorie Johnson  
 Mark & Darlene Johnson  
 Melanie Joy Johnson  
 Patricia Johnson\*  
 Robert Johnstone\*  
 Susan Jones  
 In Memory of Ruth Glen  
 Ellen Kadonaga  
 Sharon Kahn  
 Trevor Kallies  
 Rozmin Kamani

“ Supporting the Arts Club has been an integral part of my life since I was 17 years old. Four decades later and we’re still together.”

—Heather Robbie

Merle Kamin & Rob Goldberg*	Leslie Leoppky	Glenda Matthews	Diane Oorebeek
Ameen & Bev Kanji*	Dora Leung	Kathryn & Grant McRadu*	Andrew Orant*
Bina Kapahi	Alexander & Patricia Lieblich	Mrs. Sara McTaggart*	Kathie Orchard
Rosalind & Howard Karby*	Carlotta Liehti*	Joan McTavish	Donna Ornstein*
Faye Karvat	Jacqueline Link*	Rebecca Meeks	Jane Otto & Eric Hueber
In Memory of Leon Bibb	A. Little*	Livia Meret	Abby Overduin
Karen Keech	Suzanne & Greg Lonsbrough*	Giovanna Merlo	Russell & Lucille Pacey
Anne-Elise Keefer	Josephine Lord	Marie Mertler	Michael Page
Dominick & Geraldine Kelly	Tara Loseth	Brenda Metropolit	Cathryn Paish
April & Clive Kendrick	Christine Lovatt	Chris & Rebecca Meyer	Jasmine J. Panthaky*
Robert & Raymonde Kendrick	Pat Low	Susan Mielke*	Guy-Rejean Paquin
Diane & Don Kennedy	David Lowe	Debra Millar & Wally Unger*	Cheryl Neighbour & James Parker*
Heather Kennedy	Susanne Lukas*	Bob & Dawn Miller	Ken & Eleanor Parker
Patricia Kennedy	James & Jacqueline Lunn	Donnaleen Miller*	Darlene & Michael Parkinson
Colleen Kennell	Heather MacDonald	Patricia E Miller	Jo-Anne Parneta
Andrew Turnbull	Jennifer Ann MacDonald*	Elsie & Frank Millerd	Margaret L. Pattison
Erika Kertesz*	Nancy M. Macdonald*	Christine Mills	Vicky & Bill Payne
Jennifer Keyes	Roxann MacDonald*	Patsi Minnes	Jacqueline & Jonathan Peacock*
Margaret Kidd	Sharon MacKenzie*	D.B. Minichiello*	Danae Peaker
Janet Kidnie & Jim Jorgenson	Charles Maclean	Elizabeth Minish &	Ronald Pears
Diane & Robert Kikkert*	Amy & Justin MacLeod*	Christopher Petty	Anne & Randy Pearsall*
Sheena & Yggy King	Heather MacNaughton &	Catriona Misfeldt	Ed and Barbara Peck
Barbara Kisilevsky	John Edworthy	Mr. & Mrs. Hugh &	Jennifer Peles
Shirley Klassen	Jim Mactier*	Elonna Mitchell*	Margaret E. Penner*
Tony & Margie Knox*	Susan Madden	Lillian Mitchell	Evelyn & Edward Pentland*
Cindy & Alan Koberstein	Frances Maddin & Craig Douglas	Mary Mitchell	Tannis Percival*
Roger Kocheff	John Mail	Dragana & Petar Mitic	Jo-Anne Perley
M. Koenigsberg*	Maryann Maloney	Rose Mitsushio	Roberta & Scott Perrin*
Randy Kondo	Diane Manhas	Peter Moes*	Geoff Peters & Tony Ho,
Michael Koren	Rameshchandra Maniar	Penny Moir and Ron Sentell	in memory of Beverly Louie
Rene Kormos	Florence Mann	Cathy A. Moore & David Elmy	Karen & Dave Peters
Joe Kovach*	Mary-Beth & David March	David & Gerd Moore	Ian & Carolyn Petrie*
Barbara Kronstedt	Lisa Marcoe	Kate Moore	Harv Phandal
Philippe & Sylvie Kruchten	Jennifer Mardock*	Lucidea Moore*	John and Faye Phillips
Randi Kuckein	Bruce Marks & Anne Whitmarsh*	Stanley Moore	Laurie Phipps and Kathleen Ross
Barbara Kuncewicz	Tanya Marsh	Jean Morgan	Heather and George Pierce
S. Kwarcianny*	Kim Marshall	Gwynneth Moriarty	Angela Pirozzi*
David and Anita Kwong	Maureen Martell	Mary Jane (Taeko) Morita	Jeff Plato & Cheryl Leia
Alexandra & Christian La Roche	Jim & Nena Martens	Vanessa & Steve Morrell	Alwynn Pollard
LaBelle Entertainment Company*	Christian & Aniela Martin	Kathryn & Dennis Morris	Sylvia Polsky*
Theresa Ladner & Michael Sharf	Sheilagh Martin	Neil Mort	Christopher Porter and
Jas Lally & Allan Orme	Daphne & James Marvel	Joanne Morton	Rosalinda Rimmer
Alfred Lam	Cathy Massey	C. Rochelle Moss*	Lorna & Jerry Porter*
DJ Lam	Deborah Matheson*	Steph & Judy Mostardi	Mary Ann Potts and Alex MacKay
Keith Lam	Ron Matthews	Brian and Patti Moul	Nora Prevost
Mayda Lam	Lorelei Mayes	Elizabeth Mulvaney	John & Bev Price*
Ms. Paula Lam	Douglas Mazur	Alexandra Munroe	Harold and Elizabeth Punnett
Rick & Mary Lam	Brenda McAllister	Alison Murray	Anne Quackenbush
Robert and Janet Landucci	Raymond McAllister*	Julie Messenden & Thomas Nicol	Sing Quan
Bill & Denny Lang	Mary McArthur	Barbara Naef	Carol Quinn*
Mrs. Dianne Lapierre	Isabella McBride*	Harold & Charlotte Nelson*	Laura & Alan Rampton
Joan Larsen*	Beth & Scott McCaffrey	Henry Neugebauer	Chad Rathlef
Gisa Laslo	Mary F. McCallum	Brenda Ng & Dennis Bidin*	Jennifer & David Read
Trevor Lautens &	Kay & Malcolm McCaw	Carol Ng	Jenny Reed
Elizabeth Robertson,	Suzanne McConnachie	Mary Nicell-Farrell	Jane E & Russ Reid
in memory of Walter Marsh*	Diane McConnell	Heather Nichini	Lynne Reilly
Genevieve Lauzon	Donna McCredie	Barbara Nider*	Myrtle-Ann & Ed Rempel*
Dale LaVerne	Alex McCulloch	Mark and Marta Nielsen	Barbara Rendell
Jean Lawr	Dr. & Mrs. Tom McCusker*	Marylke Nieuwenhuis	Michael Reyes*
Kerry Lawson*	Michael & Maria McDonald*	Peri-Laine and Steve Nilan	Patricia Rhys
Mary Lay	James McFarland &	Janet & John Norman	H. H. Richards
Linda Lee & Michael Mulhern	Catherine Smider*	Lorraine Nowlin	William & Oksana Richards*
Patricia Lee	Brian McGavin	Darlene Nunn	Alison Richardson*
Sandra Lee	Mary M.	K. L. O'Brien*	Kerry Richardson and
Kee Wai Yeong*	Sandi McIntosh-Kocaba	Wayne O'Brien*	Lewis Silberberg
Ted & Tracey Lee*	Al McKay	Mary O'Callaghan and	Barbara Riding
Mark & Linda Leffler*	John McLaughlin	Morley Strachan	Kerry Rigden
Olga Leflar	Gordon McQueen &	Susan Olafson	Tammy Ritchie & Joe Sweeney*



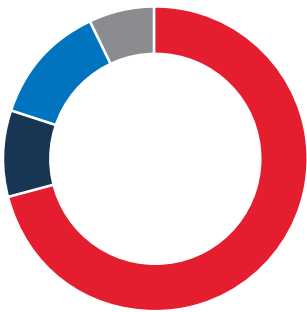
Stephanie J. Robb*	Roslyn Slater*	Susan Turnbull	Nancy & Samuel Yoshida
Heather Robbie	Barbara Smith	Ronda Tuyp	Graham & Alex Young*
In memory of Evelyn Huberman	Robert & Patricia Smith*	Matthias Uhlenbruck	Joanna Yu
Barbara & John Roberts*	Robert & Ellen Smith	Margaret Uzelac	James Zacharias
Barbara & Sandra Robertson*	Diane Smithson	Norma Vallentgoed*	Linda Zacks*
Brenda Robinson	Pierre Soucy	Debra & Chuck Van der Lee*	Liz Zaozirny
Janice Robinson*	Janis Souter*	Linda Vance*	Dr. & Mrs. Donald Zarowny
Lorna & David Robinson*	Ms. Mary Springer	Vancouverplays.com*	Natalie Zigarlick and Allen Lynch
Barb Robson	Mrs. Cyndie Spruit	Barrie & Margaret Vickers	Margaret and Vince Zuccaro
Marian Robson	Christine Stamelias	Katrina Vigen and Ryan Smart	Andrea Zwack & Michael Vermette
Gale Rocky	Margo Stanaway	Nelson Villanueva	Anonymous* x17
William Rodgers*	Joanne Ste Croix	Lori Ann Waites	Anonymous x18
Missy Rollins*	Lynn Stevens*	Jane Wakefield*	
Rona Rosic	Rebecca and Grant Stewart	Mrs. Rosemary Wakefield	
Alaura Ross & Michael Redmond*	Mr. Andrew Storrs	D.I. Walker*	
Robert & Joan Ross	Toni Stovel	Lynne Walker	
Tony & Barb Rozynski	Victoria Stratton & David Cutcher*	Lizbeth Wall	
Mae Runions	Vicky Strom*	Susan Wall	
Robert & Susan Ruttan*	Susan Stromberg	Dr. Anne Wallis	
W. Ruus*	Mary Strzelecki	Julia & Doug Wallis	
Michael Ryan*	Gideon & Renate Stuhler*	Therresa & Ron Wallsmith	
Elizabeth Sakiyama*	Peter Suedfeld & Phyllis Johnson*	Lisa Ward	
Tuija Salokannel	Judith Sullivan	Jennifer & Dymetry Warnyca	
Virginia Salter	Damien Atkins	Louise Waters	
Ronel Samis	Wendy Sutton	Tom and Heather Watson	
Harold Sanders	Sandra Swail*	Brian & Eloise Watt*	
Freja Sankey	Robert & Lori Swift	Bonnie Watts*	
Helen Sawchuck & John Breeden*	Marge Switzer	In memory of Amy Wallis*	
Ruth Schiebe	Roger and Runjeet Sylvestre	Dawn Wedman	
Sandra Schmid	Arno & Johanne Tatto	Robert Wegner	
Loretta Schmidt	Naomi Taussig & Keith Nuscarts*	Karen Weichel	
Ralf Schmidtke	Mr. & Mrs. Tavernier	Shelley Werboweski	
Ingo Schoeppler	Leigh and Nancy Taylor*	Cynthia P. Wheten*	
Lynn Schouls & Marc Boileau	Patricia & Dean Taylor*	Michael Whitmore*	
David Schreck*	Rita Taylor	Pamela Whittall & Ed Beange*	
Nancy Schultz	Rosemary & William Terry	Adrian Wijesinghe & Sheryl Wagner	
Ruth Scowcroft	Frances Tessier	Hon. Bryan &	
Nell Sem	Jolanta Teszka	Mrs. Audrey Williams*	
Alin Senecal-Harkin	Eve Teubert	Aaron & Joan Williams*	
Cathy Sevcik	Heather & Robert Thompson*	Cherie Williams	
Judith Sewell*	Nancy Thornton	Suzanne Williams and Ken Baker	
Richard & Jane Shand	Joanne Thorpe*	Noreen Willingdon*	
Kathryn Shaw*	Deborah Tildesley	Marie Wingen*	
Laura-Leah Shaw	Rudolph Tize	Craig Wilson	
Dharen Shulman	Ruth and Rick Toews	Elizabeth Wilson	
Shawn Siak*	Kerry & Harry Tomyn*	Sam Witherow & Evelyn O'Neill	
Ailsa Siemens*	Joseph Tong	Anthony Wong and Elsy Chow	
Ruby Sihota	Maureen Topley*	Ted Wong	
Ruth Silverman & Doug Knight	Josephine Tortora*	Alison Wood	
Cheryl Simpson	Alain & Kim Touchette	Sharon Woyat	
Mary Simpson*	Chrys & George Tsiknis	Rosemary Wray*	
Lynn Simpson*	Cyril & Patsy Tsou*	Jane & John Wright	
Janet Sinclair	Leslie Tulloch & Marita Merkel*	Tanya Wulff	
Marie Singh*	Lorne Turcotte & Sheila Carrie*	Stephen Wurz	
Susan & Bob Sitter	John & Jean Turnbull*	Carol Yacysheh*	
Launi Skinner	Linda Turnbull	Marian Yaremy	

“ Growing up in Vancouver, one of my childhood treats was to attend an Arts Club show with my parents. They taught me the importance of being open to new experiences. *Reflections on Crooked Walking* was my first theatre visit and I never looked back. Today, I get to share the joys and excitement of live theatre with my son. This father and son (aka #boysclubyvr) experience has created many lasting memories for us. Now I try to give back to the Arts Club because it has given me so much.”

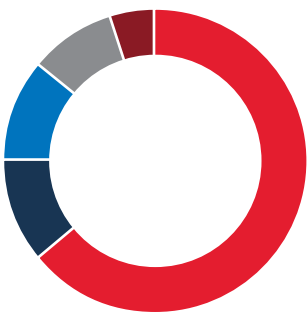
—Bennett Chin



Agnes Tong and Patti Allan in *The Shoplifters*: set and costume design by Ken MacDonald; lighting design by Alan Brodie; photo by David Cooper



Revenue		2018/19		2017/18
<span style="color: red;">■</span> Earned Revenue	71%	\$ 11,392,167	75%	\$ 12,033,392
<span style="color: darkblue;">■</span> Lounge	9%	1,499,451	9%	1,516,894
<span style="color: white;">□</span> Fundraising for Bill Millerd Endowment Fund	0%	36,201	4%	625,943
<span style="color: blue;">■</span> Fundraising for Operations	13%	2,092,008	20%	1,672,376
<span style="color: grey;">■</span> Public Sector Grants	7%	1,057,863	6%	1,031,576
<b>Total</b>	<b>100%</b>	<b>\$ 16,077,690</b>	<b>105%</b>	<b>\$ 16,880,181</b>



Expenses		2018/19		2017/18
<span style="color: red;">■</span> Production	64%	\$ 10,380,832	68%	\$ 10,968,601
<span style="color: darkblue;">■</span> Education and Administration	11%	1,780,906	10%	1,610,175
<span style="color: white;">□</span> Moved to Bill Millerd Endowment Fund	0%	36,201	4%	625,943
<span style="color: blue;">■</span> Premises, Amortization, Rental	11%	1,862,000	9%	1,526,641
<span style="color: grey;">■</span> Bar Operations	9%	1,381,257	8%	1,350,505
<span style="color: darkred;">■</span> Fundraising	5%	759,805	3%	556,341
<b>Total</b>	<b>100%</b>	<b>\$ 16,201,001</b>	<b>103%</b>	<b>\$ 16,638,206</b>
Surplus (Deficit)		\$ (123,311)		\$ 241,975

**Ashlie Corcoran,**  
Artistic Director

**Peter Cathie White,**  
Executive Director

## Artistic

**Artistic Director Emeritus** Bill Millerd  
**Resident Designer** Ted Roberts  
**Associate Artistic Director** Stephen Drover  
**Artist Liaison** Stephanie Hargreaves  
**Producer** Melissa Tsang  
**LEAP Leader** Shawn Macdonald  
**LEAP Assistant** Veronique West  
**Musical Theatre Intensive** Peter Jorgensen  
**Actor's Intensive Program Director** Dean Paul Gibson  
**Actor's Intensive Head Instructor** Scott Bellis  
**Creative Teens Program Leader** Nitasha Rajoo  
**Afterschool Drama Club Instructors** Aidan Parker,  
 Sam Bregoliss

## Production

**Director of Production** Stephan Baeuml  
**Pre-Production Manager** Ace Martens  
**Technical Director, Granville Island & Goldcorp**  
 Craig Fulker  
**Technical Director, Stanley** Patsy Tomkins, Dan Paterson  
**Assistant Technical Director** Andrea Rideout  
**Production Administrator** Dawn Padget  
**Production Assistant** Josh Tompke  
**Granville Island Head Electrician** Darren Hales  
**Stanley Theatre Head Electrician** Cody Biles  
**Goldcorp Stage Technician** Darren John  
**Rental Technician** Calvin Baker  
**Tour Technician** Alberto White  
**2<sup>nd</sup> Electrician** Kianna Skelly  
**Stanley Head Stage Carpenter** Lucas Hall  
**Granville Island Stage Carpenter** Jeff Leard  
**2<sup>nd</sup> Stage Carpenter** Jeremy Vreeken, Jeff Leard,  
 Sebastian Obel  
**Head Sound Technician** Sebastian Finch  
**2<sup>nd</sup> Sound Technician** Kevin Gault  
**Head Dresser** Donnie Tejani, Oriana Camporese  
**Head Scenic Carpenter** Joao Carlos d'Almeida  
**2<sup>nd</sup> Scenic Carpenters** Lorraine West, Chris White  
**Head Scenic Artist** Kristine Kavalec  
**Head Properties** Mike Gall  
**2<sup>nd</sup> Properties** Robyn Volk  
**Head Wardrobe** Kirsten McGhie  
**2<sup>nd</sup> Wardrobe** Tiffany Bishop  
**Cutter** Sarah Marchant  
**Stitcher** Victoria Klippenstein  
**Wardrobe Maintenance** Mary Jane Cox, Sean Malmas

**Stage Managers** Angela Beaulieu, Lois Dawson, Sandra Drag, Caryn Fehr, Kathleen Gordon\*, Ronaye Haynes, Jan Hodgson, Pam Jakobs, Geoff Jones, Becca Jorgensen\*, Peter Jotkus, Jenny Kim, Alannah Korf\*, April Star Land, Koh McRadu\*, Rebecca Mulvihill, Rick Rinder, Tanya Schwaerzle, Allison Spearin, Yvonne Yip  
 \*Apprentice Stage Managers

## Facilities

**Facilities Manager** Jack Holmes  
**Venue Rentals Manager** Catherine Wilson  
**Rental Technicians** Calvin Baker, Darren Paine  
**Buildings Maintenance** Kris Jankovic

## Finance and Administration

**Director of Finance & Systems** Valerie Prodanuk  
**Manager of Administration** Teddy Forsyth  
**Director of Education** Kevan Ellis  
**Education & Outreach Associate** Kerri Lee, Hila Graf  
**IT Manager** Allan Kong  
**HR Generalist** Lacey Schumann  
**Database Manager** Lou Ann Mendoza  
**Administrative Assistant & Volunteer Coordinator**  
 Heather Kemski, Danna Batara  
**Accountant** Igor Rozenberg, Karin Capitanio  
**Accounting Assistant** Eileen Craig, Claire Bardach,  
 Karis Sengara

## Development

**Director of Development** Kathy MacKenzie  
**Manager of Corporate Sponsorship & Foundations**  
 Andrea Hébert  
**Manager of Individual Giving** Helen Wong,  
 Catherine Gautreau  
**Planned Giving Officer** Eleanor Ryrle  
**Events Associate** Misty Oakes, Alena Villeneuve  
**Fundraising Campaign Coordinator** Catherine Gautreau  
**Fund Development Associate** Erica McLachlin  
**Development Coordinator** Alena Villeneuve, Amanda Millar  
**Development & Marketing Intern** Amanda Millar

## Sales & Marketing

**Director of Sales & Marketing** Bryan Woo  
**Publications and Communications Manager** Susan Cho  
**Marketing Manager** Jaime Fletcher  
**Publicist** Sarah Barton-Bridges  
**Writer & Web Projects Lead** Angela Caravan  
**Graphic Designer** Sean Gordon  
**Tour Coordinator** April Green  
**Sales System Specialist** Gabriel Kirkley  
**Digital Marketing Coordinator** Linda Pitt  
**Data and Marketing Coordinator** Eray Sertkaya  
**Digital Storyteller** Mark Halliday



## Box Office

**Ticket Operations Manager** Andrea Francom

**Ticket Sales Supervisors** Natalie Pawson, Erica McLachlin, Rebecca Lees

**Ticket Sales Supervisor, Groups** Danny Mak

**Ticket Sales Agents** Ria Antonopoulos, Daniela Atiencia, Jo B., Elaine Bevans, Alexandra Eaton, Angela Espinoza, Louna Fezoui, Brett Harris, Rebecca Lees, Gwenda Lorenzetti, Jennifer Lynch, Tim Mahoney, Parmida Maleki, Emma Middleton, Colin Milne, Olivia Moedt, Shari Mountain, Kirk Olson, Yvette Rizzo, Chanelle Sheehan, Erin Schneider, Max Tindley, Rebecca Waitt, Michael Wilkinson, Julianne Wilson

## Front of House

**Guest Services Manager** Peter Chapek

**Front of House Managers** Laura Eveleigh, Janelle Sheppard, Aidan De Lacy, Halla Bertrand

**Front of House Attendants** Brendan Blanchard, Celeste Cadieux-Rey, Susan Chalmers, Atticus Cseh, Linda Guthrie, Meredith Hambrock, Ronaye Haynes, Noah Heyl, Vanessa Ho, Indra Isita, Michelle Kaesar, Aaron Lee, Shirley Lum, Miguel Santa Maria, Atsumi Mizuuchi,

Nicola Nasedkin, Laura Napier, Kirsten Niedtner, Shea O'Connor, Darshat Patel, Sandy Peters, Mylyn Ramos, Ashton Ramsay, Veronica Rozenberg, Roberta Sciarretta, Chanelle Sheehan, Pam Skafffeld, Nathan Smith, Paul Weston, Karen Worrod, Vanessa Yee

## Bar and Lounge

**Director of Food and Beverage** Torrance Jestadt

**Bar Managers** Colin Speir, Chris Schonfeldt, Lucas Floody

**Bar and Lounge staff** Chari Agellon, Thomas Beag, Shane Booth, Paddy Cole, Emmaso Desmeules, Daniel Egan, Mike Frydenlund, Jamie Gourley, Stewart Hawthorne, Daniel Henderson, Max Hill, Rachel Hinds, Emma Hobbs, Gizele Hourvash, Savanna Junjek, Ashleigh Kearns, Nicole Kelly, Amy Kilgannan, Kalina Kojwang, George Koumbounis, Nicole Krukowski, Chloe Lloyd, Alison Madden, Fernanda Mattos, Alanna Meehan, Harrison MacDonald, Ron Mill, Tracey Obertos, Shayla Oulette, Emma Pederson, Emilda Radjah, Dallas Richards, George Smith, Alanna Spence, Rebecca Syme, Maria Villamar Trejos, Elaine Whealan, Joshua White-Pidhirney, Katarzyna Zacheja

Leslie Dos Remedios, Baraka Rahmani, Kate Dion-Richard, and Lauren Jackson in *Miss Bennet: Christmas at Pemberley*; set design by Ted Roberts; costume design by Amy McDougall; lighting design by Conor Moore; photo by David Cooper





# CONTACT US

## Arts Club Theatre Company

BMO Theatre Centre  
203-162 West 1<sup>st</sup> Avenue  
Vancouver, BC V5Y 0H6

604.687.5315  
artsclub.com

Charitable Registration  
No. 11921 3551 RR0001

COVER PHOTO: Daniel Doheny in *The Curious Incident of the Dog in the Night-Time*; set and costume design by Drew Facey; photo by David Cooper

Toby Berner and Giovanni Sy in *The Great Leap*; set design by Heipo C.H. Leung; costume design by Stephanie Kong; lighting design by John Webber; projection design by Chimerik 似不像; photo by David Cooper

